

## Product Data Sheet (2021-03-22)

### FlexTherm LS 200 - 300

Storage vessel for potable hot water, for use in systems in which heat can be exchanged by external heat exchangers.



Type	Capacity [l]	Dimensions *			Insulation colour	Weight [kg]	###	Order Code
		Ø [mm]	H [mm]	Tilting height [mm]				
FlexTherm LS 200	200	560	1360	1500	white	55	1	18623
FlexTherm LS 200	200	560	1360	1500	white alu.	55	1	18624
FlexTherm LS 300	300	660	1620	1750	white	95	1	18720
FlexTherm LS 300	300	660	1620	1750	white alu.	95	1	18721

\* Dimensions including insulation.



Type	Distance from floor to connection centres						
	A [mm]	B [mm]	C [mm]	D [mm]	E [mm]	F [mm]	K [mm]
FlexTherm LS 200	65	245	545	710	885	1075	1285
FlexTherm LS 300	65	310	-	850	950	1340	1560

### Advantages

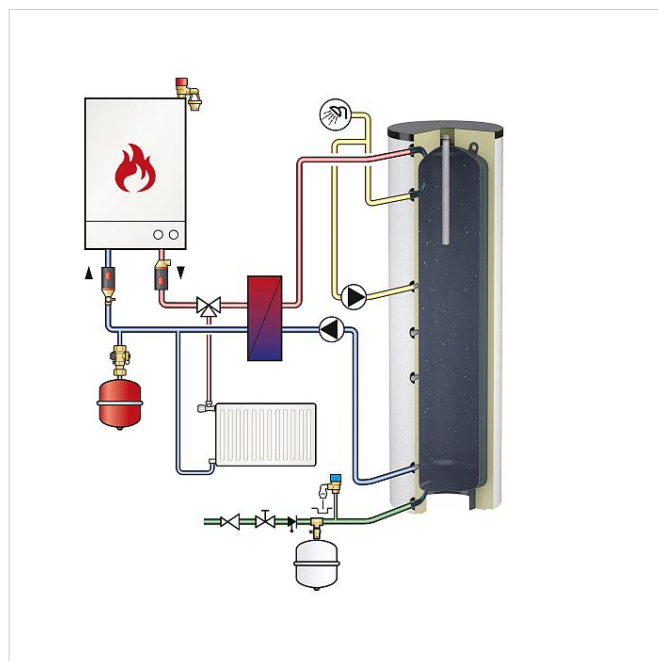
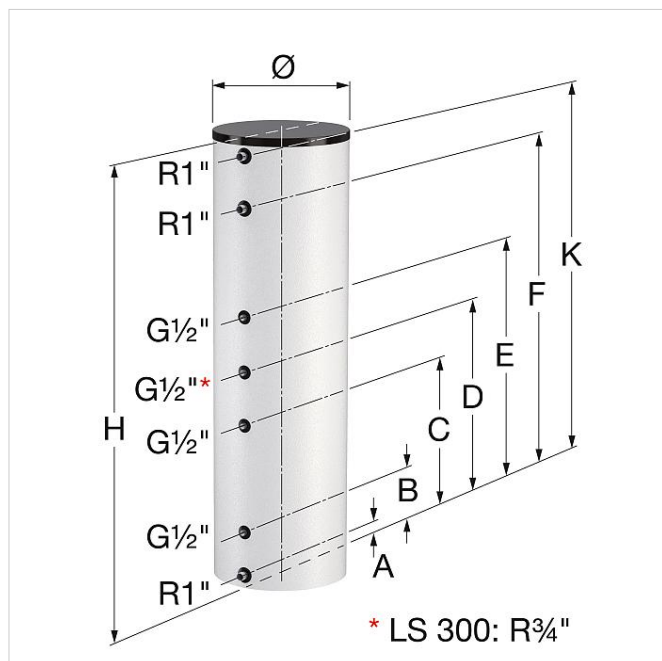
- High-quality glass lining according to DIN 4753/part 3 for hygienic hot water production and optimum corrosion protection in combination with a no-maintenance or Mg anode.
- Including adjustable feet for accurate levelling.
- Suitable for connecting external heat exchangers.
- Connections for thermostat - thermometer - circulation.

## Technical information

- Maximum working pressure: 10 bar.
- Maximum working temperature: 95 °C.
- Insulation:

Standard colours: white (RAL 9010) and white aluminium (RAL 9006).

Including hard foam insulation (direct foam injection) with a polystyrene outer shell.



## Find more information online:

[Manuals](#)

[Certificates](#)

[CAD drawings](#)

[Extra documentation](#)

Flamco Group  
 Plotterweg 31  
 3821 BB, Amersfoort - nl  
**T** +31 33 299 75 00  
**E** [info@flamcogroup.com](mailto:info@flamcogroup.com)  
**I** [flamcogroup.com](http://flamcogroup.com)