

Product Data Sheet (2021-03-22)

FlexTherm LS 500 - 3000

Storage vessel for potable hot water, for use in systems in which heat can be exchanged by external heat exchangers.



Type	Capacity [l]	Dimensions *			Insulation colour	Weight [kg]	###	Order Code
		Ø [mm]	H [mm]	Tilting height [mm]				
LS 500	500	650	1640	1800	white	125	1	18630
LS 500	500	650	1640	1800	white alu.	125	1	18635
LS 750	750	750	1970	2070	white	190	1	18637
LS 750	750	750	1970	2070	white alu.	190	1	18638
LS 1000	1000	800	2230	2320	white	232	1	18640
LS 1000	1000	800	2230	2320	white alu.	232	1	18641
LS 1500	1500	1000	2320	2480	white	397	1	18643
LS 1500	1500	1000	2320	2480	white alu.	397	1	18644
LS 2000	2000	1100	2440	2600	white	474	1	18646
LS 2000	2000	1100	2440	2600	white alu.	474	1	18647
LS 3000	3000	1200	2830	3000	white	730	1	18654

* Dimensions excluding insulation.



Type	Distance from floor to connection centres					
	A [mm]	B [mm]	C [mm]	D [mm]	E [mm]	F [mm]
FlexTherm LS 500	60	285	485	830	1375	1600
FlexTherm LS 750	60	300	637	970	1420	1900
FlexTherm LS 1000	70	310	645	1100	1670	2160
FlexTherm LS 1500	85	385	585	1160	1935	2235
FlexTherm LS 2000	105	405	605	1180	1955	2235
FlexTherm LS 3000	95	420	620	1420	2405	2730

Advantages

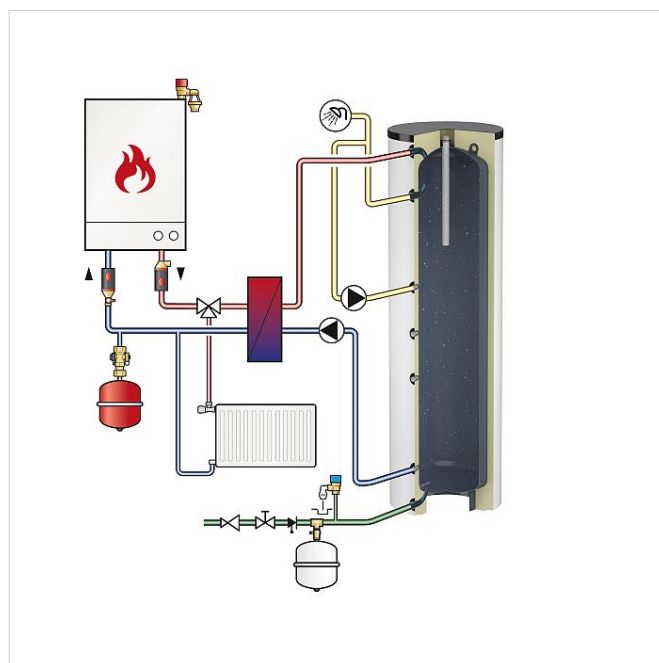
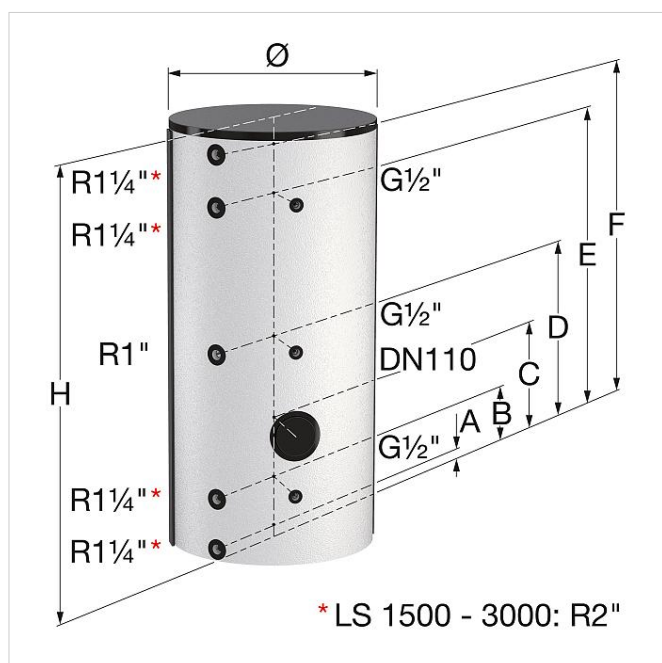
- High-quality glass lining according to DIN 4753/part 3 for hygienic hot water production and optimum corrosion protection in combination with a no-maintenance or Mg anode (standard from 1,500 litres).
- Including adjustable feet for accurate levelling.
- Suitable for connecting external heat exchangers.
- Connections for thermostat - thermometer - circulation.
- Cleaning & inspection flange DN 110 at the side (LS 1500 - 3000 also at the top side).

Technical information

- Maximum working pressure: 10 bar.
- Maximum working temperature: 95 °C.
- Insulation:

Standard colours: white (RAL 9010) and white aluminium (RAL 9006).

Including EPS insulating mantle (fire category B1) with a polypropylene outer shell (fire category B2).



Find more information online:

[Manuals](#)

[Certificates](#)

[CAD drawings](#)

[Extra documentation](#)

Flamco Group
Plotterweg 31
3821 BB, Amersfoort - nl
T +31 33 299 75 00
E info@flamcogroup.com
I flamcogroup.com