



MULTICAL® 403

Heat meter (EI)
 Model 403
 Max 2 K, 171 °C
 Max 2 K, 135 °C

Cooling meter (EZ)
 Max 2 K, 182 °C
 Max 2 K, 130 °C

CE MTR 0200
 EN 14330:2004

Serial number
 71000098

Dimensions:
 H: 100 mm
 W: 50 mm
 D: 50 mm

Weight:
 0,5 kg

Material:
 Cast iron

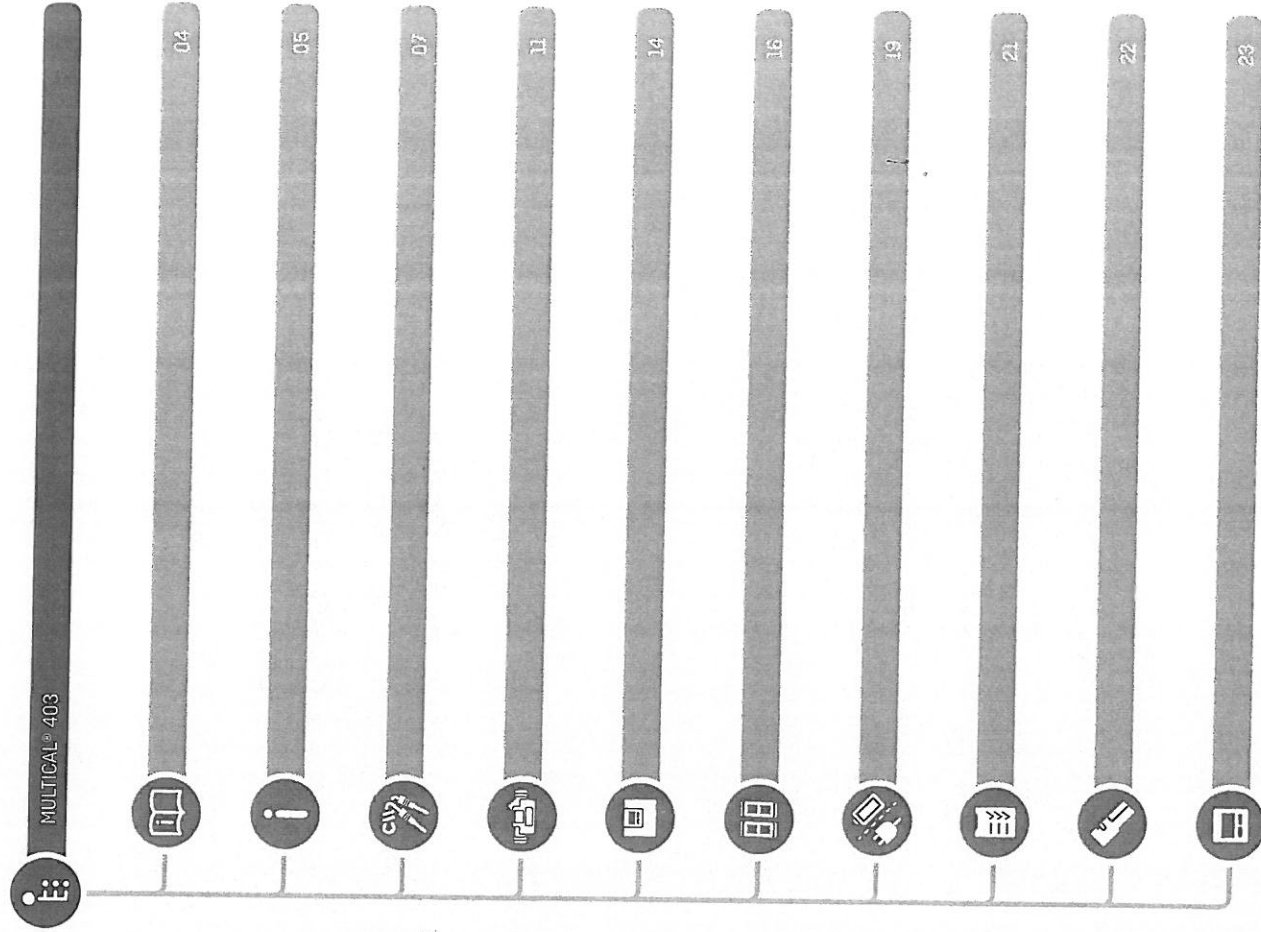
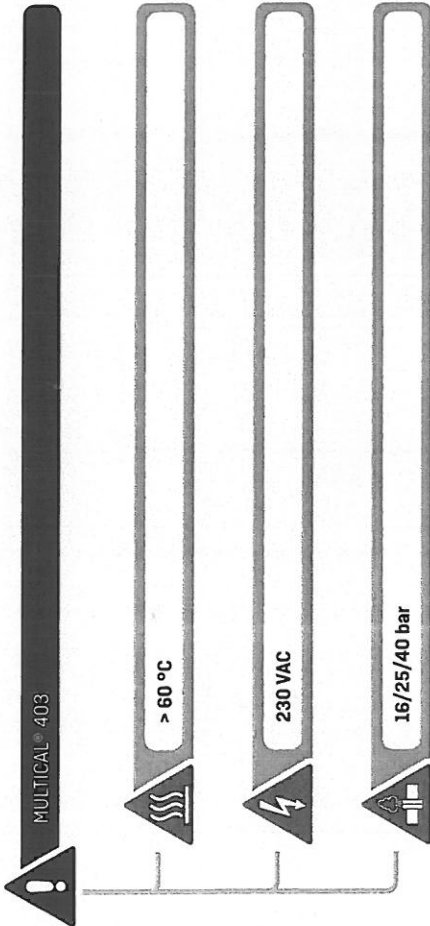
Finish:
 Enamel

Battery:
 3 x D-cell

CE Marking:
 CE MTR 0200

kamstrup

kontrolleret



?

http://static.kamstrup.dk/hardlink/userguides/ab_mc403.htm



✓

?

<http://products.kamstrup.com/?goto=584>



✓

<http://products.kamstrup.com>



E1

MID ✓ EN1434 ✓

θ: 2 °C...180 °C Δθ: 3 K...178 K ✓

E3

DK-BEK 1178 ✓ EN1434 ✓

θ: 2 °C...180 °C Δθ: 3 K...178 K ✓

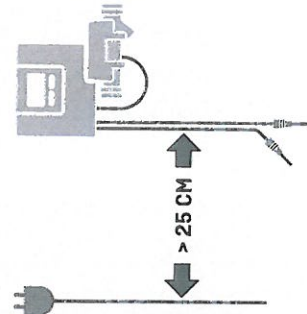
θq: 2 °C...130 °C ✓



E1 ✓

M1 ✓

M2 ✓

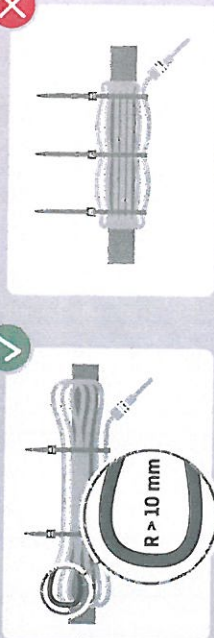
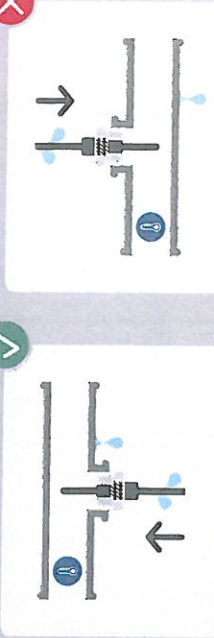
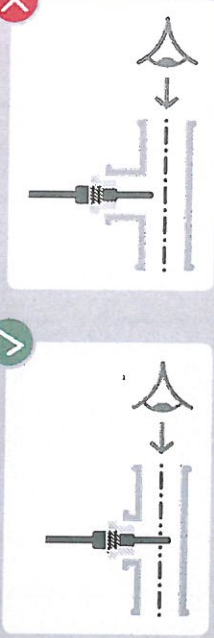
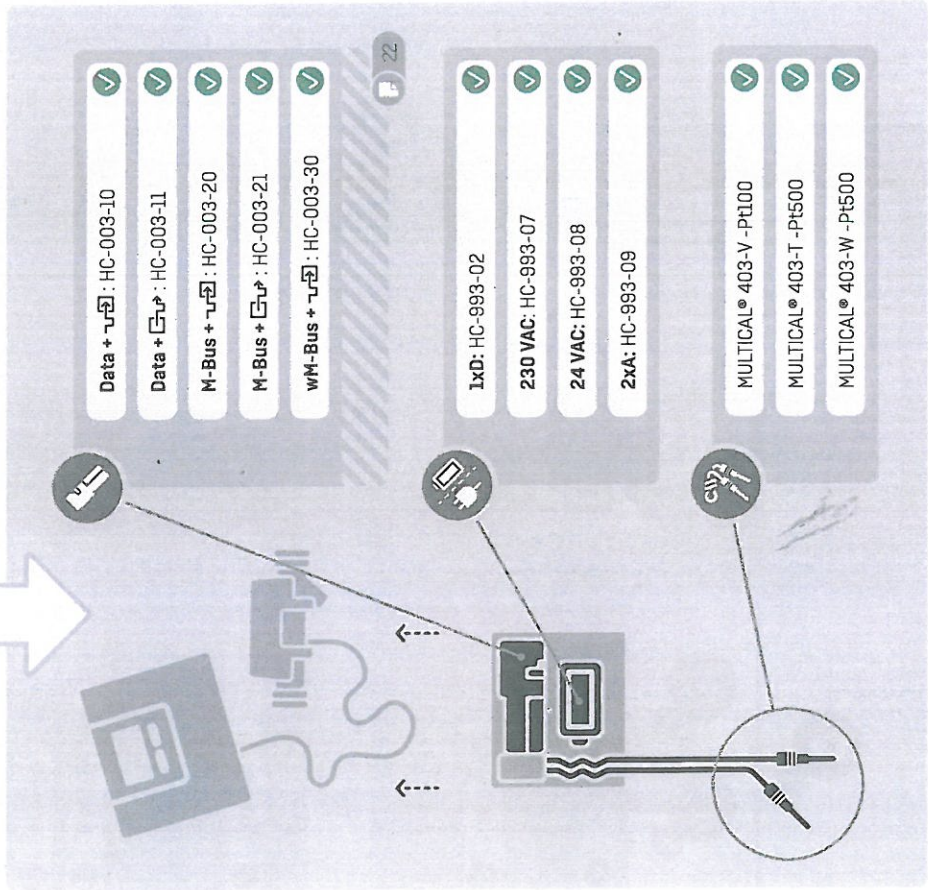
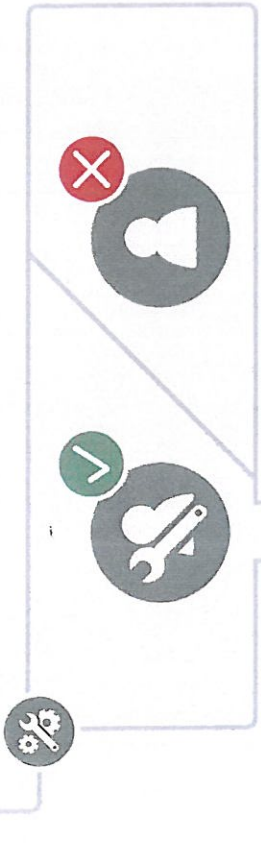


5 °C...55 °C ✓

5 °C...55 °C ✓

5 °C...55 °C ✓





Diagrammatic instructions for step 2/4:

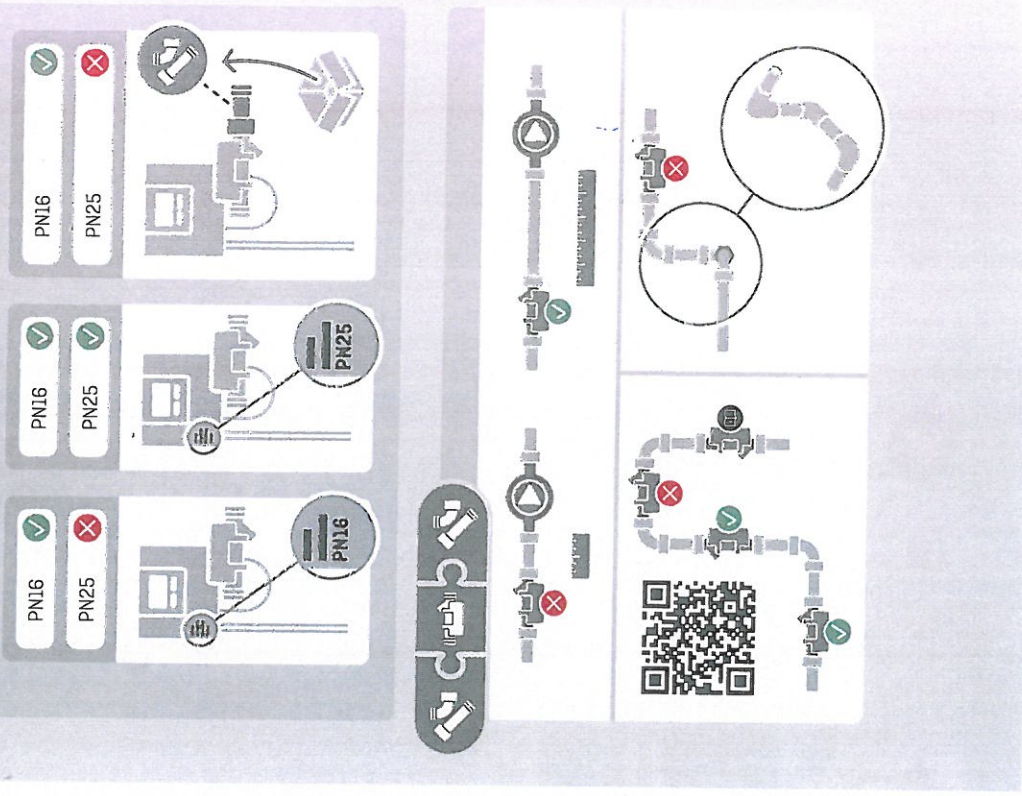
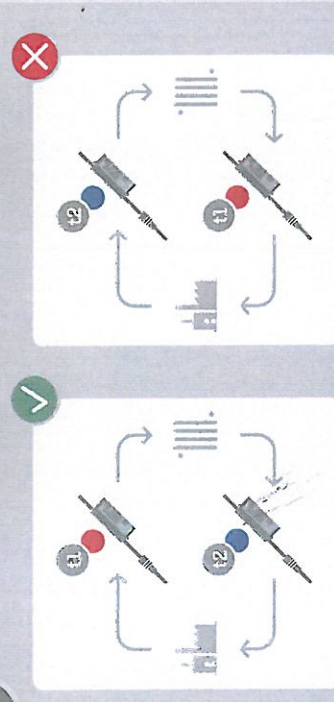
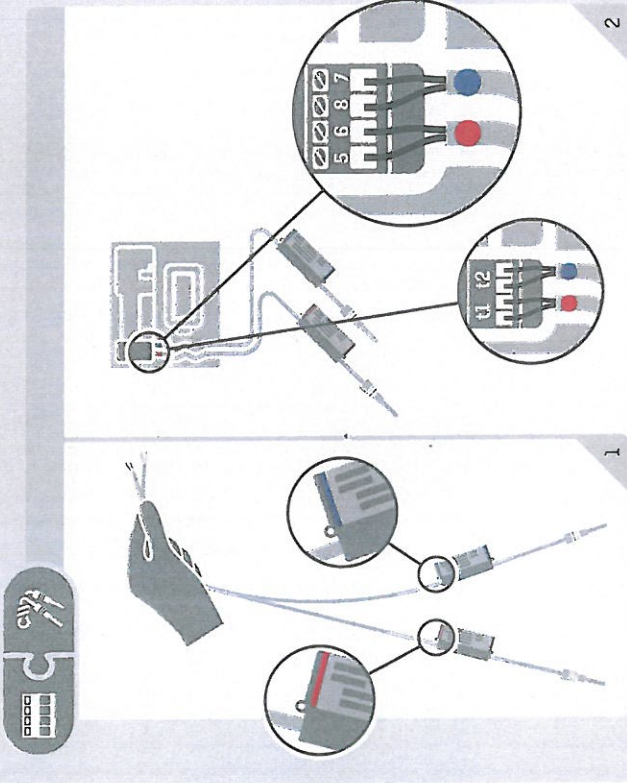
- Top-left: Shows a correct cutting sequence. A wire is cut with side cutters. A green checkmark is next to the correct sequence (cutting from the side). A red X is next to an incorrect sequence (cutting from the top).
- Top-right: Shows a correct stripping sequence. A wire is stripped with a utility knife. A green checkmark is next to the correct sequence (stripping from the side). A red X is next to an incorrect sequence (stripping from the top).
- Bottom-left: Shows a correct stripping sequence. A wire is stripped with a utility knife. A green checkmark is next to the correct sequence (stripping from the side). A red X is next to an incorrect sequence (stripping from the top).
- Bottom-right: Shows a correct stripping sequence. A wire is stripped with a utility knife. A green checkmark is next to the correct sequence (stripping from the side). A red X is next to an incorrect sequence (stripping from the top).

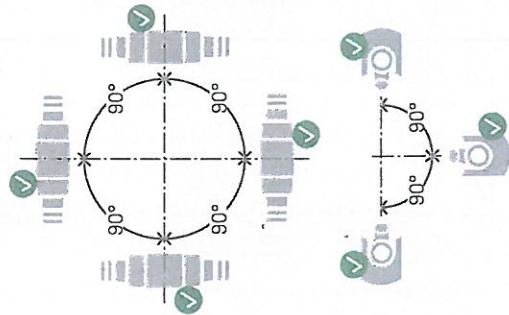
Table of wire specifications:

qp	DN	ε	DS 2/1,5	DS3B
0.6-1.5	15	G4B	✓	
0.6-1.5	20	G1B	✓	
3.5-6	25	G5/4B	✓	
10	40	G2B		✓
15	50			✓

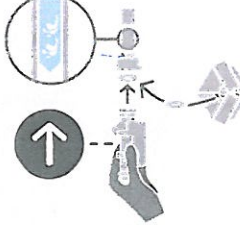
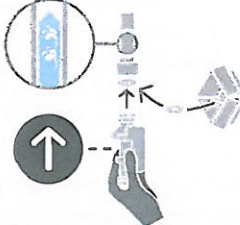
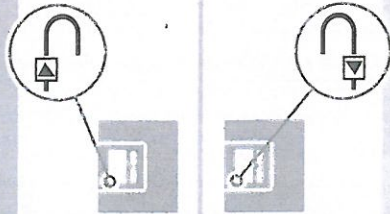
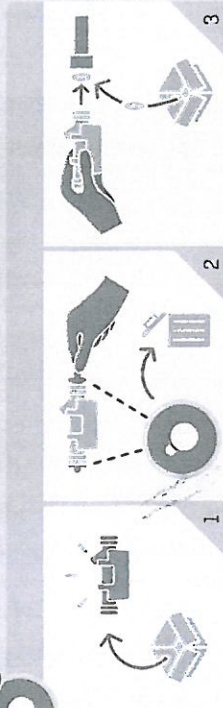
Diagrammatic instructions for step 3/4:

- Top-left: Shows a correct stripping sequence. A wire is stripped with a utility knife. A green checkmark is next to the correct sequence (stripping from the side). A red X is next to an incorrect sequence (stripping from the top).
- Top-right: Shows a correct stripping sequence. A wire is stripped with a utility knife. A green checkmark is next to the correct sequence (stripping from the side). A red X is next to an incorrect sequence (stripping from the top).
- Bottom-left: Shows a correct stripping sequence. A wire is stripped with a utility knife. A green checkmark is next to the correct sequence (stripping from the side). A red X is next to an incorrect sequence (stripping from the top).
- Bottom-right: Shows a correct stripping sequence. A wire is stripped with a utility knife. A green checkmark is next to the correct sequence (stripping from the side). A red X is next to an incorrect sequence (stripping from the top).





MULTICAL® 403-T





1/2

1

2

3

1

2

3

3026655

qp ≈ 2.5 m³/h



2/2

1

2

3

4

E3

qp ≥ 3.5 m³/h

1

2

3

4

1

2

3

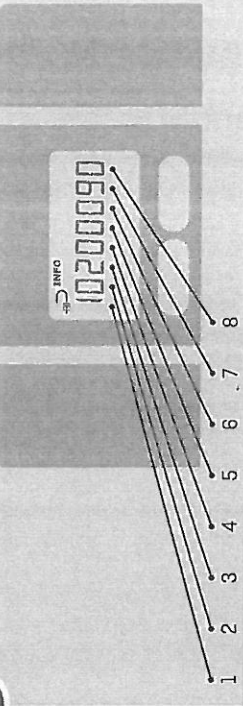
4



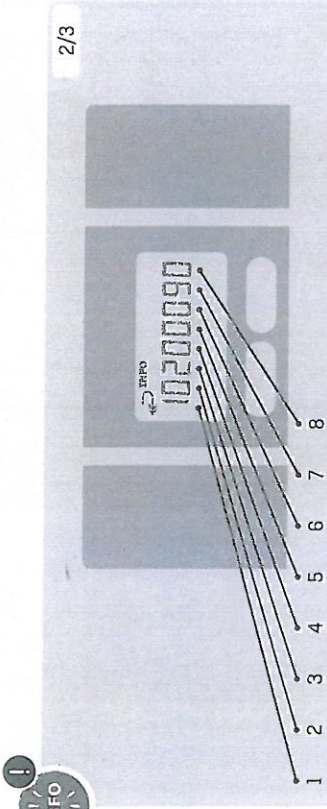
1/3



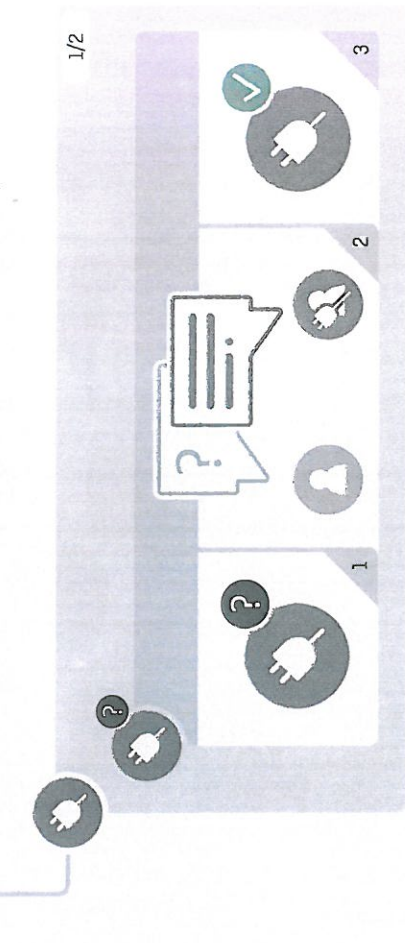
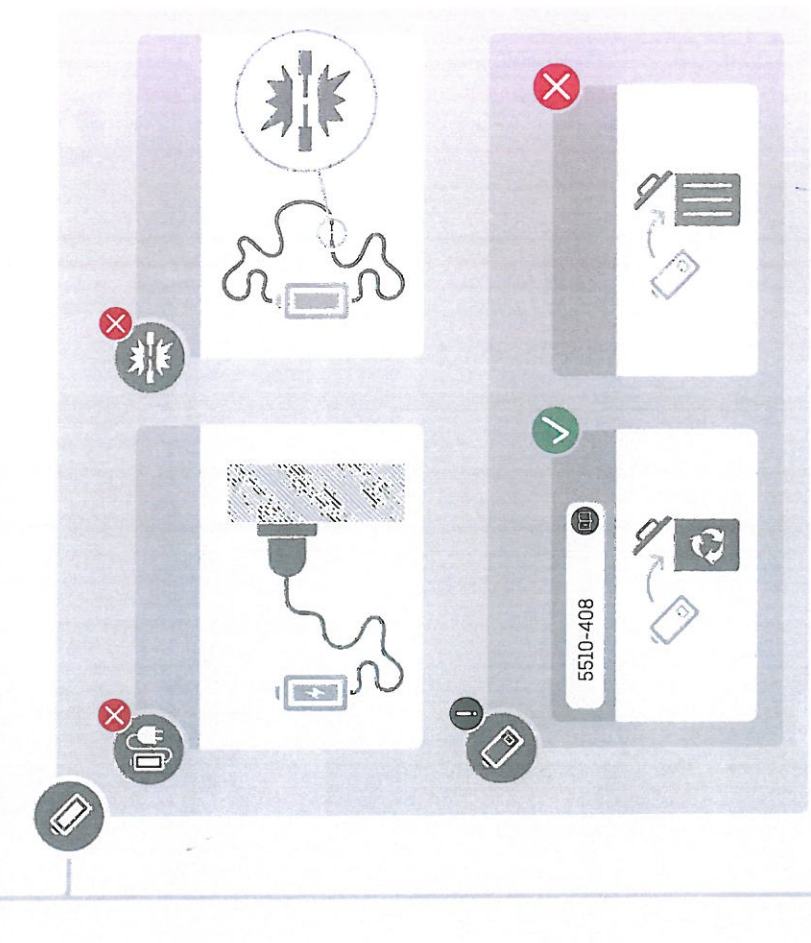
2/3



Info t1 t2 0 VI 0 In-A In-B



Info	t1	t2	VI	0	In-A	In-B
3			VI			
4			VI			
6			VI > qs			
8			⌂ A			
9			⌂ A			
8			⌂ B			
9			⌂ B			

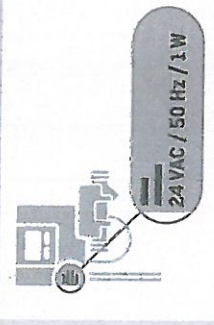
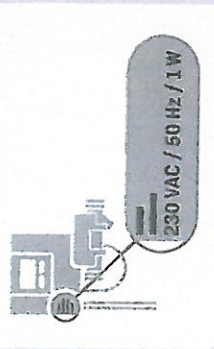




2/2

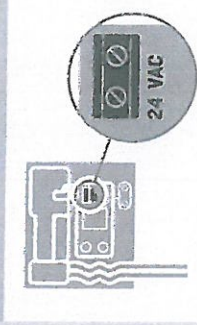
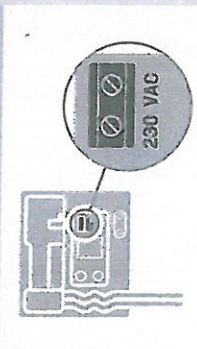
230 VAC / 50 Hz / 1 W

24 VAC / 50 Hz / 1 W

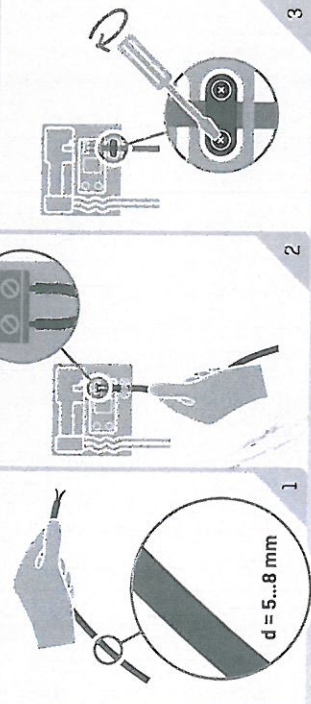


230 VAC

24 VAC



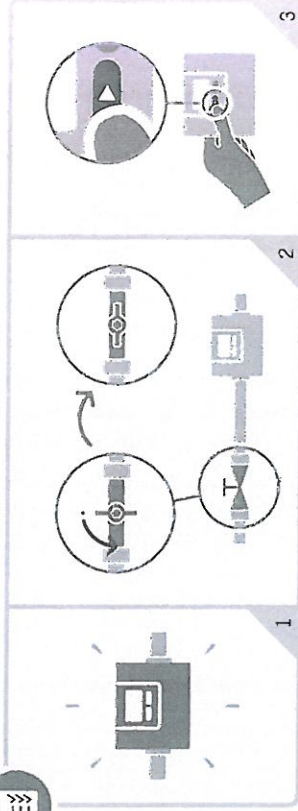
d = 5...8 mm



1

2

3



3

2

1

t1

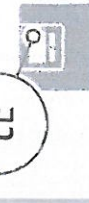


t1 = XX.XX



✓

t2



t2 = XX.XX



✓

1/h



V1 = XX.XX



✓

4



Data + \square : HC-003-10	✓
Data + \square : HC-003-11	✓
M-Bus + \square : HC-003-20	✓
M-Bus + \square : HC-003-21	✓
M-Bus + \square : HC-003-22	✓
WM-Bus + \square : HC-003-30	✓
WM-Bus + \square : HC-003-31	✓
Analog \square : HC-003-40	✓
BACnet + \square : HC-003-66	✓
Modbus + \square : HC-003-67	✓

\square = In-A / In-B \square = Out-C / Out-D \square = Out 1 / Out 2



1 0030297 MWh
2 0015363 MWh
3 0105133 m³
4 0018483 h
VOL



MULTICAL® 403

kamstrup



Heat meter (E1)
62 °C, 100 °C
62 °C, 130 °C
62 °C, 150 °C

CE 111040200
DI 000000000007



Q1 2.2 m³/h
Q1 1.5 m³/h
Q1 1.0 m³/h
Q1 0.5 m³/h

Q1 0.2 m³/h
Q1 0.1 m³/h

Q1 0.05 m³/h

Q1 0.02 m³/h

Q1 0.01 m³/h

Q1 0.005 m³/h

Q1 0.002 m³/h

Q1 0.001 m³/h

Q1 0.0005 m³/h

Q1 0.0002 m³/h

Q1 0.0001 m³/h

Q1 0.00005 m³/h

Q1 0.00002 m³/h

Q1 0.00001 m³/h

Q1 0.000005 m³/h

Q1 0.000002 m³/h

Q1 0.000001 m³/h

Q1 0.0000005 m³/h

Q1 0.0000002 m³/h

Q1 0.0000001 m³/h

71000088

kamstrup

314317108