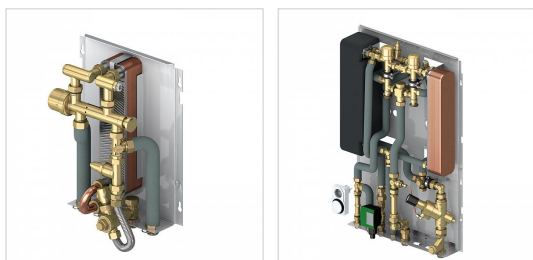


Product Data Sheet (2021-04-07)

LogoVital

The LogoVital are compact, ready-to-fit, surface-mounted and decentralised interface stations in which the hot water preparation is controlled proportionally according to volume. These interface stations are also available with high hot water preparation outputs to guarantee a high degree of comfort.



Type	Model	Hot water output				###	Order Code
		[l/min] *	[kW] *	[l/min] **	[kW] **		
LogoVital type 1		12	35	15	37	1	M10231.35WWB
LogoVital type 2		17	46	20	50	1	M10231.41WWB
LogoVital type 3	Without domestic water circulation	24	65			1	M10231.49
LogoVital type 4	With domestic water circulation	24	65			1	M10231.50

* Defined for a flow line temperature of 65 °C and heating of 40 K.

** Defined with a supply temperature of 65 °C and a heating of 35 K (other flow regulator are required).



	LogoVital			
	Type 1	Type 2	Type 3	Type 4
Dimensions (of the housings to be taken into account) (width x height x depth *) [mm]	298 x 391 x 170	428 x 528 x 190	580 x 925 x 150	580 x 925 x 188
Connections – cold water/hot water and circulation (where featured) bottom	3/4"	3/4"	3/4"	3/4"
Connections – flow and return line building connection network bottom	3/4"	3/4"	1"	1"
Stainless-steel plate heat exchanger (copper-soldered), vertical design to reduce the risk of calcification	1	1	2	2

	LogoVital			
	Type 1	Type 2	Type 3	Type 4
PM controller with priority switching, anti-calcification coating and DVGW approval	1	1	2	2
Bleed valve with hose connection on the heating side	✓	✓	✓	✓
Spool piece (1" x 130 mm) for an optional heat meter			✓	✓
Volume flow restrictor	✓	✓	✓	✓
Pipework made from insulated stainless-steel corrugated pipes	✓	✓	✓	✓
Mounted on base plate, with absolutely no mechanical stress, and inspected	✓	✓	✓	✓
Dirt trap with stainless-steel sieve insert	✓	✓	✓	✓
Spool piece ($\frac{3}{4}$ " x 110 mm) for an optional cold water meter	M10252.51**		✓	✓
Adjustable circulation bridge (35-65 °C)	M10252.22**	M10252.23**		✓
Differential pressure regulator – balancer (control range- 10 - 40 KPa) for autom. hydr. station balancing			✓	✓
Domestic water circulation with separate timer, heat exchanger insulation and adjustable circulation bridge (35 - 65 °C) for keep warm function in the primary heating circuit	M10252.44**	M10252.45**		✓

* Depending on the configuration and type of housing.

** Optional assemblies, which can be ordered and integrated

Technical information

- Hydraulically controlled.
- Max. heating/sanitary pressure: PN 10/PN 10.
- Max. permissible heating/sanitary temperatures: 110 °C/110 °C.

Find more information online:

[Extra documentation](#)

Flamco Limited
Washway Lane
WA10 6PB, St Helens, Merseyside - gb
T +44 17 447 447 44
E info@flamco.co.uk
I flamcogroup.com/uk-en