

Product Overview

Edition 43

**Energy-efficient system solutions
for building technology**





Dear Partner,

For almost 60 years, Meibes has been increasing user convenience in building technology systems by means of its high-quality products for heating and domestic water systems. Our products not only meet the latest energy efficiency requirements, but can also be installed simply and in a modular format.

Our core competences lie in the area of pre-assembled fitting units and system solutions that are perfectly coordinated with each other - custom-made for original equipment manufacturers or commercial customers. The basic idea in this regard is the creation of added value through shorter installation times and lower staff requirement for the installers. With our 45 registered patents, we regard ourselves as pioneers in the area of quick mounting systems.

Market-ready solutions are developed in this way from the initial idea, up to series production, and they are used by installers all over the world.

Our products are not only of high quality, but also sustainable. In the manufacturing process, we set great store by responsible use of resources - both in our own company and in our certified suppliers. The finished products are durable, energy-efficient and easy to recycle.

Since 2001, Meibes has been part of Aalberts Industries N.V. of the Netherlands, a group of companies operating internationally with the focus on technical products in the area of installation, heating and chilled water (cooling) systems and solar applications. Along with our sister companies Flamco and Simplex, we cover a broad spectrum of technical building systems. The synergy effects from this strong team mean that we are competent partners when it comes to one-stop solutions - starting with the heat source, via heat emission up to heat distribution.

In order to live up to the high quality requirements of the customers, Meibes is certified under DIN EN ISO 9001: 2015 and DIN EN ISO 14001:2015.



Maarten van de Veen
CEO
Hydronic Flow Control



Dr. Patrick Mergel
Geschäftsführer
Meibes System -Technik GmbH



Customer Solutions



Energy Efficiency



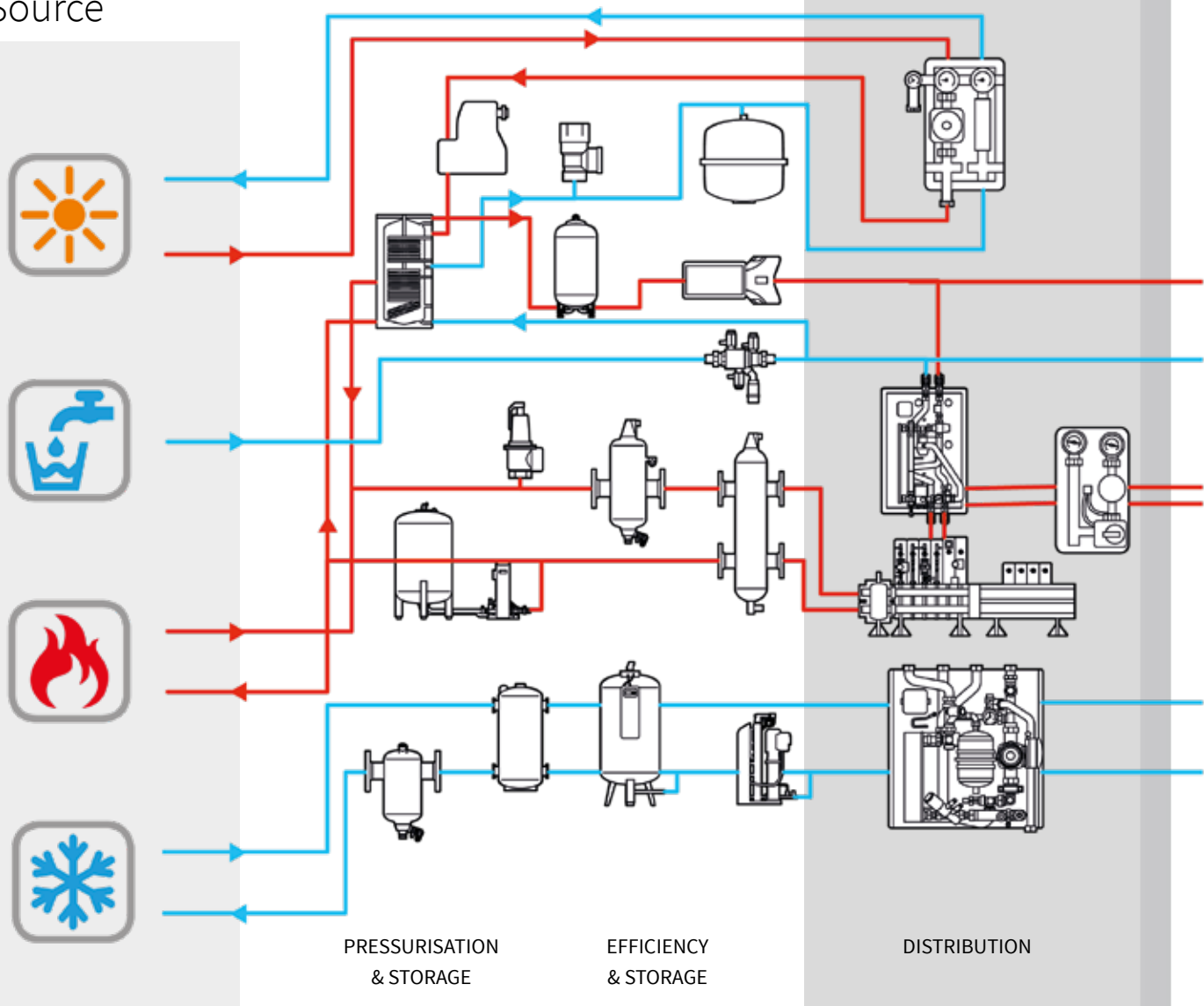
Customer Service

Hydronic Flow Control

From Source

BOILER ROOM

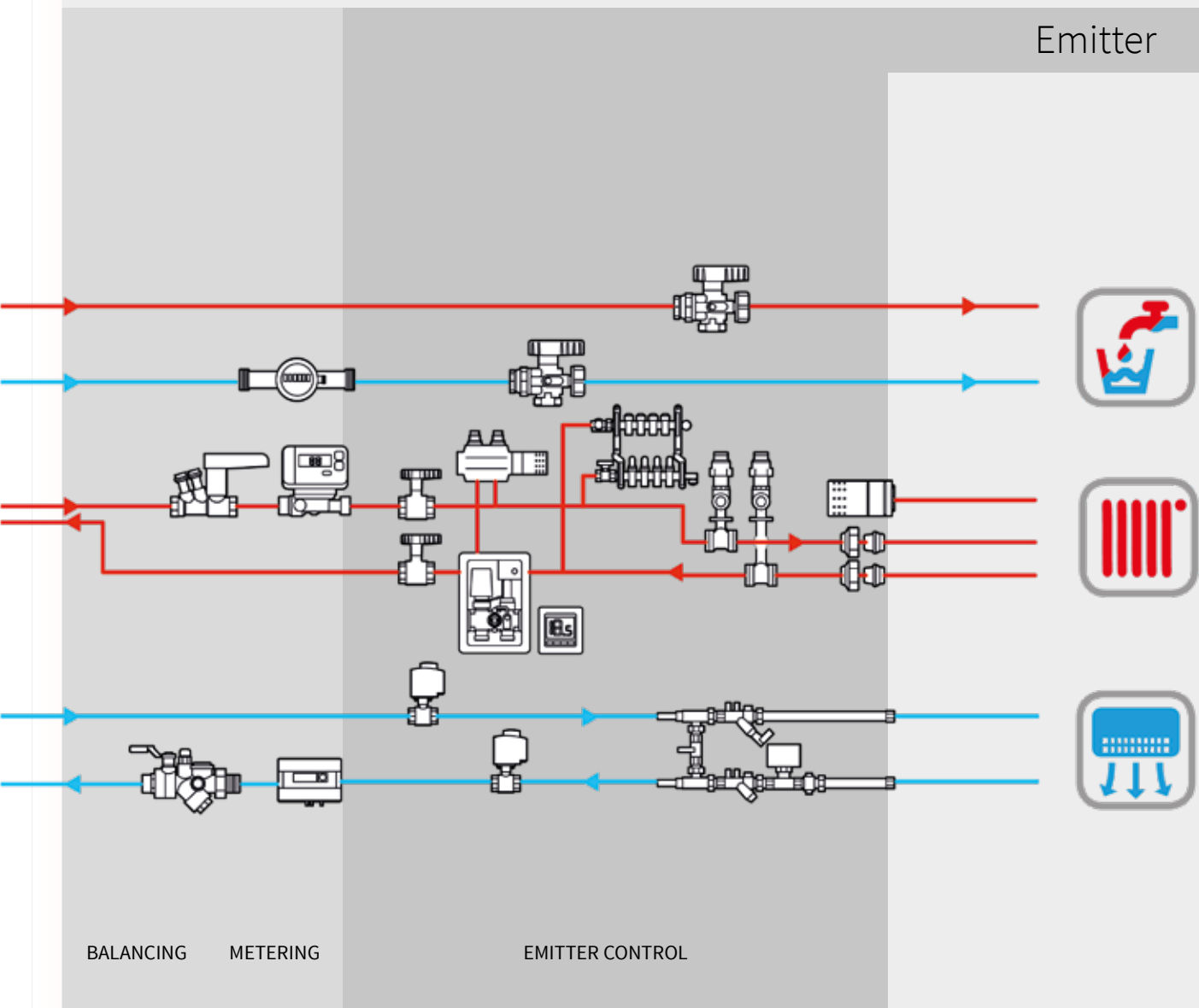
Source



to Emitter

HEAT & COOLING DISTRIBUTION

Emitter



meibes

simplex

System components for Heating, Cooling & Potable Water Installations

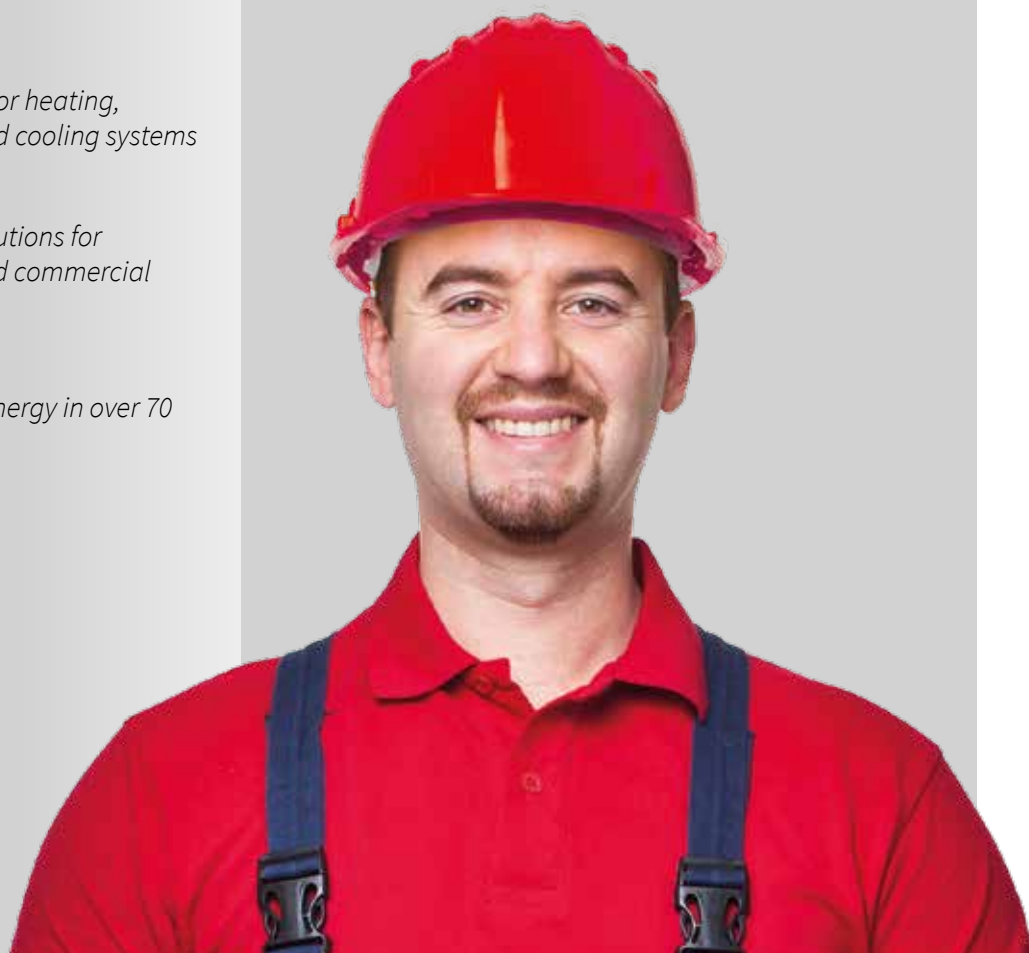
The Flamco Group specialises in the development, production and sale of high-quality components for heating, ventilation and cooling systems. Whether it be systems for pressure maintaining, fittings for solar systems, safety valves or pipe clamps and mounting rails – all products are engineered to meet the highest standards in user-friendliness, energy efficiency and sustainability.



*Components for heating,
ventilation and cooling systems*

*Innovative solutions for
residential and commercial
buildings*

*Sustainable energy in over 70
countries*



Solutions for heating components and systems

Simplex develops, produces and markets intelligent solutions and systems for the heating and sanitary sector, Made in Germany – but well beyond the confines of the German market. As a result of watching the market closely, we are constantly able to offer the latest product technologies, combined with a carefully selected choice of materials, and in this way to set new product and performance standards.



Solutions for heating components and systems

Innovative problem solvers

Quality "Made in Germany"

System components for Building Technology



Meibes' core competence is the development of quality products for heating systems that meet the latest energy and efficiency standards. The pioneer in the market for quick mounting units offers pre-assembled sets which bring more convenience to setting up these systems worldwide.



Innovative developments

Pre-assembled sets

*More convenience
in installing systems*



Highlights

Nexus Valve circuit control valves

- large selection of circuit control valves
- all models of manual circuit control valves up to differential pressure regulators and control valves independent of pressure
- for simplifying and speeding up installation, equalisation and operation
- manufactured in accordance with ISO quality standards
- optional service package including technical documentation and support
- user-friendliness and energy saving for the end user

Interface stations for heating (HIU) and cooling (CIU)

- compact, immediately operational stations, simple connection
- all functions of an independent heating circuit and water heating
- continuous flow principle for hygienically safe domestic hot water
- simple integration of metering devices
- thermally efficient, renewable energy sources can be optionally integrated
- can be supplied as visible, wall-mounted system or as virtually invisible flush-mounted assembly
- for refurbishments or new developments

Pump groups and distributors

- modular pump groups and distribution system for heating capacity up to 2300 kW and up to 100 m³/h flow-through
- simple and fast installation
- thermally separated distribution system
- 90° angle connectors for small spatial dimensions
- can be extended with boiler guard
- absolute planning and calculation security
- tested for 100% sealing and ready for immediate use



Table of contents

Page	Name	Chap.
12	Decentralised interface stations	1
16	LogoComfort KS 600 & 600+	NEW PRODUCT
18	LogoComfort 500, 600 & 600+	
20	LogoPack	
21	LogoVital	
24	LogoMatic KS 600 & 600+	NEW PRODUCT
22	LogoAktiv	
26	LogoMatic Comfort / LogoMatic Comfort+	
28	LogoEco E / LogoEco Compact E	
29	Floor distributors	
30	Cladding wall-mounted	
32	Cladding flush-mounted	
34	Control technology	
36	LogoCool - decentralised cooling station up to 24 kW	NEW PRODUCT
38	Fresh water stations	2
42	LogoFresh XL-Line, electronic controlled (new controller!)	NEW PRODUCT
44	LogoFresh S-Line, electronic controlled	
44	LogoFresh M-Line, electronic controlled	
46	LogoFresh S-Line, thermostatically controlled	
47	LogoFresh M-Line, thermostatically controlled	
50	Consumption metering	3
52	Compact heating/cooling meter "heatplus"	
53	Ultrasound compact heat flow meter "heatsonic"	
54	Ultrasound compact heat flow meter "heatplussonic"	
56	Ultrasound split heat flow meter "heatsonic"	
57	Heat flow meter accessories	
56	Installation kits for initial installation	
60	Domestic apartment water meter (wall-mounted)	
60	MODULARIS ETK-EAX / ETW-EAX	
61	Domestic apartment water meter (flush-mounted)	
61	MODULARIS MTK-OZX / MTW-OZX	
62	Water meter flush-mounted accessories	
64	ETK-EAV/ETW-EAV	
65	ETK-EAK/ETW-EAK with pulse output	
66	Water meter wall-mounted accessories	
66	Flush-mounted fittings combination (UPAK)	
69	Domestic property water meter	
71	Metering stations	
72	District heating stations	4
74	District heating stations up to 20 kW / indirect connection	
76	District heating stations up to 20 kW / direct connection	
78	District heating station 20 up to 40 kW / indirect connection	
80	District heating stations for local heating grids 20 up to 60 kW, indirect connection / modular construction	
82	Module for district heating station 40 kW up to max. 4 heating circuits & district heating stations 20, 40 and 60 kW	
83	Complete stations LogoTwin H (hydraulically controlled) and LogoTwin T (thermostatically controlled)	NEW PRODUCT

Page	Name	Chap.
86	Heat distribution	5
88	Universal cascade	NEW PRODUCT
90	Systems up to 2,300 kW (large manifold):	5.1
92	Boiler guard (G)	
92	Transitions from boiler guard to manifold	
93	Manifold (2-circuit module / 3-circuit module)	
93	Angle connector for manifold	
94	(F) - pump groups UK / MK DN40 to DN60	
99	Flange spacer for FL pump groups	
96	Pump groups LFCH (LogoFlow Control) / Accessories	
98	Transitions from large manifold to the heat generator	
99	Transitions from FL pump groups to heating circuits	
99	Shut-off sets for FL-UK / FL-MK	
100	Systems up to 100 kW:	5.2
102	Pump groups V-UK DN25-32	
103	Pump groups V-MK DN25-32	
104	PG with meter installation fitting V-UK-Z / V-MK-Z (DN25-32)	
105	Accessories for large manifold or in system up to 100 kW	
105	Manifold module, hydraulic diverter	
106	MeiTronic - weather-controlled system control	NEW PRODUCT
108	Systems up to 70 kW:	5.3
110	Kombimix	
112	Pump group Ed. 8 UK	
113	Pump group Ed. 8 MK	
114	Pump group Ed. 8 MK, weather-controlled controller	
114	Pump groups with meter installation fitting (UK, MK)	
115	Constant value control set	
116	Return line boost (2- and 1-line), new actuator!	NEW PRODUCT
118	Separation system	
119	Components for boiler connection and accessories	
119	Servomotor (new servomotor 66341.33)	NEW PRODUCT
120	Manifold, boiler guard K	
120	Connector set for expansion vessel, safety group	
121	Shut-off sets	
122	Heating boiler separation system and accessories	
124	Systems for condensing boilers:	
126	TKM for wall-mounted boiler (with mixer/ thermostatically controlled)	
127	TKM separation system and accessories	
128	Systems for solar systems	6
130	One circuit solar station S	
131	Two circuit solar station S	
132	Two circuit solar station M	
133	Solar separation system M	
134	SolaVentec II (solar station M/L)	
136	Solar XL - heat exchanger solar station	
138	Solar XXL - heat exchanger solar station	
139	Solar controller	
140	Components for solar systems	

Page	Name	Chap.
Chapter 6 continued - Systems for solar systems		
141	Stainless steel corrugated pipe, double circuit, for solar (insulated)* *FixLock screw fittings flat-sealing for stainless steel corrugated pipe to be found on page 226 / Chapter 12	
142	Circuit control valves	7
144	Static circuit control valves Nexus Valve Fluctur	
146	Static circuit control valves Nexus Valve Vertex	
146	Shut-off ball valve with pre-set Nexus Valve Initus	
147	Shut off ball valve Nexus Valve Relax	
148	dynamic circuit control valves Nexus Valve Vivax	
149	Automat. Flow rate and temperature limiter Nexus Valve Vivax T	
150	Differential pressure regulator Nexus Valve Passim	
151	Accessories / metering computer Flowmeter	
152	Domestic water fittings	8
154	Thermal control valve (ZIV) for domestic water circulation	
156	Red brass piston valves	8.1
158	Piston valves with female thread	
159	Backflow preventer and accessories	
161	Flush-mounted valves – circular flow system accessories	
161	Sampling valve / and set for last draw-off point	
162	Hot-pressed brass fittings	8.2
164	Freeflow valves DIN-DVGW	
166	Backflow preventers capable of being shut off DIN-DVGW	
168	Refurbishment systems for domestic water distribution	8.3
170	Angle valves for hot/cold water for manhole refurbishment	
171	Components for manhole refurbishment (manifolds)	
171	Wall ducts for hot/cold water	
173	Wall panels with tap extension	
174	Connecting links	
174	Manhole refurbishment with multi-layer composite piping	
176	Radiator accessories	9
178	Thermostatic control elements	9.1
180	Thermostatic head startec 4	
182	Thermostatic head startec 2	
183	Thermostatic head rotherm 2	
184	Thermostatic valve bodies	9.2
186	Thermostatic valve bodies for twin bi-tube heating systems	
186	Short design	
187	With fine pre-adjustment / with extended flow coefficient	
188	Bi-tube connection sets	
188	Mono-tube connection sets	
188	Manual regulator valve for bi-tube heating systems	
189	Accessories and removal equipment	
190	Refurbishment systems for mono-tube heating systems	9.3
192	Bypass – assemblies for conversion and new installation of vertical mono-tube heating systems	
192	Metallic sealing	
194	Flat-sealing	

Page	Name	Chap.
Chapter 9 continued - Radiator accessories		
196	Bypass – assembly for conversion of Forst single-storey heating systems	
197	Thermostatic valve bodies for conversion of vertical mono-tube heating systems, flat sealing	
197	Thermostatic valve bodies for conversion of Forst single-storey heating systems	
197	Adjustable spanner, disassembly device	
198	Heating system fittings	10
200	Expansion compensator	
201	Backflow preventer, 'In pipe stainless', thermal block	
202	Shut-off valve, threaded joints / flange ball valves	
203	Meibes flange ball valves	
203	Pipe crossing fittings, meipass double cross pieces	
204	Mixing valve, safety valves for heating systems	
204	Dirt trap with fill and drain ball valve for draining	
205	Bleed valve	
205	MAG - ball valve and coupling	
205	KFE / KFR taps	
205	'Filly' automatic filling assistant for heating systems	
206	Flexible connections	11
208	inoflex stainless steel corrugated pipe, fixed lengths (including and excluding insulation)	
208	inoflexi-Stretch connection pipes of stainless steel	
209	inoflex stainless steel corrugated pipe, rolled goods	
209	Stainless steel corrugated pipe - screw fittings (flat-sealing)	
210	FixLock - tool-free quick-screw fitting for inoflex stainless steel corrugated pipe, for heating, solar and sanitary	
211	Flat-sealing screw fittings for inoflex stainless steel corrugated pipe	
212	meiflex - reinforced hose for heating with galvanised braid and EPDM inner lining	
214	meiflex - reinforced hose for heating/air conditioning with stainless steel braid and EPDM inner lining	
216	meiflex - reinforced hose for sanitary/heating/air conditioning with stainless steel braid and silicon inner lining	
218	meiflex - reinforced hose sanitary specially for domestic water with stainless steel braid and silicon inner lining	
219	Accessories for meiflex - reinforced hose	
220	Reinforced hose for gas with stainless steel braid and stainless steel corrugated pipe as inner lining	
221	Service price list, request forms, article number list, index, terms and conditions	Annex



Make use of the individual equipment options for your project...

e.g. the use of a domestic water circulation system, the integration of heat and/or water meters and living space control. A wide range of visually pleasing wall-mounted and (“invisible”) flush-mounted models are available. Logotherm interface stations are ideally suited for radiator heating systems and/or mixed heating circuits (FBH heating systems).

Cut your operating costs...

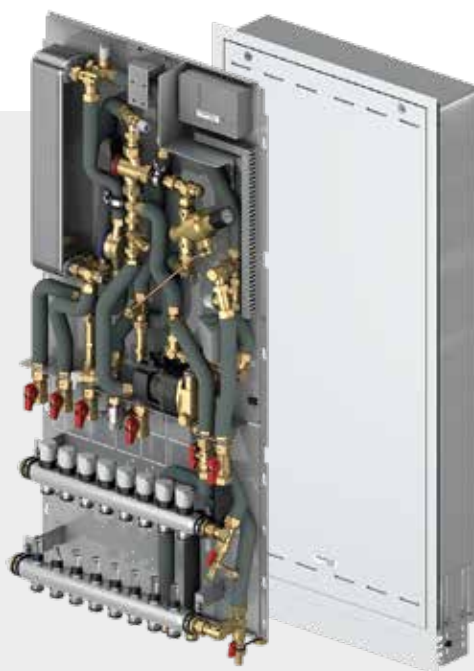
Bring your old heating system up to the latest technical standard simply and quickly with Logotherm interface stations.

Boost your customer/user satisfaction...

through greater efficiency and convenience with heat distribution and hot water preparation.

Find out more about the options for use and other advantages of Logotherm systems in this catalogue or visit us at www.meibes.de.

Interface stations



1



The **Logotherm interface station** is a compact, ready-connected unit that takes over all the functions of an independent heating system and hot water preparation. Depending on the system and application, hot water output is designed in such a way that several draw-off points can be supplied at the same time. The domestic water heating occurs dependent on use as required. Storing domestic hot water in tanks is no longer required. This means that only three circuits (3-pipe system) for heating flow, heating return and cold water supply are needed (WW circuit + circulation not required).

The Logotherm principle:

An individual heat source (boiler, BHKW, local/district heating transfer station, etc.) provides the interface stations with heating-circuit water via a heated circuit. They take over the decentralised distribution of the heat, control heating need and/or produce hot water directly at the user (residential or business unit) by means of a plate heat exchanger on the continuous flow principle, hygienically, faultlessly and safely.

Your advantages

- Fast and simple installation
- High and hygienically safe domestic hot water convenience*
- Individual control of living space heating to boost your network efficiency
- Depending on the station, also with weather-controlled heating circuit controller
- Depending on the station, also for problematic potable water
- Low maintenance

Suitable products:

Design your consumption billing even more efficiently using the precise consumption metering per residential unit by means of integrated station heating (cooling) and/or cold water meter (option). Use by remote, M-bus and/or data-logging equipped devices (option) guarantees rapid datalogging at any time.

The complete programme of energy and water meters can be found from page 51.

We will also be happy to advise you on OMS-capable products.

*according to DVGW Worksheet W551

Interface station working method

1

Interface stations can function using 3 possible control techniques, where each model has its own specific advantages.



Hydraulic control technology

is activated by pressure differentials by means of the necessary proportional mix control (PF-controller), ensuring immediate hot water preparation on drawing off through proportional regulation of the primary flow rate.

Advantages:

- Works without additional energy (electricity)
- Priority switching for hot water preparation
- Fast and reliable (high control speed)
- Avoids standby losses at the heat exchanger
- Simple and proven technology (in use >20 years)



Electric control technology

is activated by a microprocessor controller, ensuring immediate hot water preparation on drawing off through temperature-dependent control of the primary flow rate.

Advantages:

- Only low primary pressures needed
- Priority switching for hot water preparation
- Controls to the hot water temperature set to one degree, independent of changes in the cold water or primary temperature (e.g. summer/winter operation).
- Option: Activation via mobile devices (smartphone etc.) or the GLT (product dependent).

Overview

Overview of complete stations CS (incl. housing, ball valve closing set etc.) for immediate installation and hydraulic integration as well as complete stations that can be configured to your specific requirements with respect to additional/complementary products.

In addition, you will find information on the output ranges and primary kit characteristics of Logotherm interface stations. Precise or additional kits for Logotherm interface stations may be found on the stated pages.

1


Product line		Type		l/min. ¹	WW-Output up to kW ¹	Complete station (incl. housing, ball valve connection set)	kW ²	Heating capacity	Installation type	Heating circuit	Construction depth from 110 mm	TW circulation ⁵	Remote read-out ⁴	Data logging	from page
Hydraulically controlled															
LogoComfort KS		600	20	50	✓	10	✓	✓	✓						16
LogoComfort+ KS		600+	20	50	✓	10	✓	✓		✓	✓				16
LogoComfort		500	15	37		10	✓	✓	✓				✓		18
		600	20	50								✓			18
LogoComfort+		600+	15	37		10	✓	✓		✓	✓	✓	✓		18
			20	50											18
LogoPack			15	37		10		✓	✓				✓		20
LogoVital		35	15	37									✓		21
		45	20	50			✓					✓			21
		65	24	65				✓					✓		21



Electrically controlled														
LogoMatic KS	600	20	50	✓	10	✓	✓		✓			✓		24
LogoMatic+ KS	600+	20	50	✓	10	✓	✓		✓	✓		✓		24
LogoAktiv	Plus	12	35											22
		18	50		20	✓	✓		✓	✓		✓	✓	22
		26.5	70											22
LogoMatic Comfort	600	15	37		10	✓	✓		✓		✓	✓	✓	26
		20	50											26
LogoMatic Comfort+	600+	15	37		10	✓	✓		✓	✓		✓	✓	26
		20	50											26
LogoEco E	H-HW	10	35		21 ³	✓		✓				✓		28
LogoEco Compact E	HW	10	35			✓						✓		28

1) The attainable outputs depend on the basic grid parameters

2) At 20 K spread

3) At 30 K spread

4) Possible with special housing

5) Optional

The following additional products can be found on the following pages:	from page
Underfloor manifolds for integration in stations	29
Wall-mounted and flush-mounted covers (also for remote read-out)	30
Control and activation accessories	34
Metering devices for consumption metering (Cold or hot water meter and heat flow meter)	51
Pump groups	93
Circuit control valves	143
Underfloor manifolds (external) via Simplex	

LogoCool decentralised cooling station to be found on pages 36 /37.

Complete stations LogoComfort KS 600 & 600+



1



Fig. 1

The complete stations LogoComfort 600 and 600+ are compact, ready-connected decentralised interface stations with proportional mix controlled hot water preparation and provision of heating to living areas as wall-mounted system incl. housing with ball valve connection set, in order to allow you a simple selection, quick delivery and also simple operation.

The LogoComfort 600 is available with static heating circuit, the LogoComfort 600+ with a direct mixed circuit plus 6 floor manifolds or with a direct mixed circuit and 9 floor manifolds and a second static heating circuit.

LogoComfort complete station is available as wall-mounted (AP) or flush-mounted version (UP), as well as with brazed heat exchanger (CU) or stainless steel soldered heat exchanger (ES).



Fig. 2

Complete stations LogoComfort KS		WT	Installation type	WW-Output	Fig.	Art. No.
		CU / ES	AP / UP			
600 RH-AP	stat. Heating circuit	CU	AP	171-202 l/min. & 461 - 502 kW	Fig. 1	AI-11104HKAP
600 RH-UP	(st. HK)	CU	UP			AI-11104HKUP
600+ FBH-AP	Mixed circuit (MK)	CU	AP			AI-11104.6MKAP
600+ FBH-UP	with 6 manifolds	CU	UP		Fig. 2	AI-11104.6MKUP
600 FBH/RH-AP	MK with 9 manifolds	CU	AP		Fig. 3	AI-11104.9MKAP
600 FBH/RH-UP	& st. HK	CU	UP			AI-11104.9MKUP
600 RH-AP	stat. Heating circuit	ES	AP			AI-11104HKAPES
600 RH-UP	(st. HK)	ES	UP			AI-11104HKUPES
600+ FBH-AP	Mixed circuit (MK)	ES	AP			AI-11104.6MKAPES
600+ FBH-UP	with 6 manifolds	ES	UP			AI-11104.6MKUPES
600 FBH/RH-AP	MK with 9 manifolds	ES	AP			AI-11104.9MKAPES
600 FBH/RH-UP	& st. HK	ES	UP			AI-11104.9MKUPES

1) Specifies at a flow line temperature of 65 °C and heating by 40 K

2) Specifies at a flow line temperature of 65 °C and heating by 35 K



Fig. 3

Complete stations LogoComfort KS 600 & 600+



NEW!

Complete stations
also available with
stainless steel
soldered heat
exchanger!

Complete station LogoComfort KS 600 / 600+ Kit features		LogoComfort		
		600 RH	600+ FBH	600 FBH/RH
Dimensions in mm (AP version)	Width	600	600	850
	Height	800	1,000	1,210
	Depth	210	210	210
Dimensions in mm (UP version)	Width (front cover size, aperture size larger)	610	610	845
	Height (front cover size, without height-adjustable feet)	835	1,175	1,175
	Depth (adjustable)	175-220	180-220	195-220
Connections below		3/4"		
Max. pressure: Heating / Sanitary		6 bar / PN10		
Max. permissible temperatures: Heating / Sanitary		110°C / 110 °C		
Heating capacity (at 20 K)		10 kW		
static heating circuit (st. HK)		✓	-	✓
Mixer circuit with controlled servomotor, VL temp. sensor, HE pump UPM3 AUTO 15-70		-	✓	✓
Underfloor manifolds with 6 outlet pieces (3/4" AG Euro cone, 0.5-5 l/min, 6 bar)		-	✓	-
Underfloor manifolds with 9 outlet pieces (3/4" AG Euro cone, 0.5-5 l/min, 6 bar)		-	-	✓
Stainless steel plate heat exchanger, Vertical orientation for reduced risk of lime scale		✓		
Heating control valve (zone valve for connection to living space control)		✓		
Venting with hose connection on heating side		✓		
Adaptor for heat flow meter 3/4" × 110 mm		✓		
Pipework made from insulated stainless steel corrugated pipe		✓		
Assembled and tested on base plate completely free of mechanical stress		✓		
Dirt traps with stainless steel sieve insert (incl. drainage function)		✓		
second KW connection for residences		✓		
Cold water meter adaptor 3/4" × 110 mm		✓		
Heat retention function of the primary heating-circuit water intake via an adjustable circulation bridge (35-65 °C)		✓		
Differential pressure regulator/balancer (control range 10-40 kPa) for automatic hydraulic Station balance		✓		
Throttle plate		✓		
7 ball valves DN20 with sensor mounting for the WMZ, TW ball valves DVGW tested		✓		
Wall-mounted housing made of painted steel (RAL 9016)		see identification marking AP		
Flush-mounted housing made of painted steel (RAL 9016)		see identification marking UP		
Height-adjustable feet (100-170 mm)		see identification marking UP		

Logotherm interface stations with
optional kits can be configured on
request.

LogoComfort 500, 600 & 600+



1



Fig. 1



Fig. 2



Fig. 3

LogoComfort 500, 600 and 600+ are compact, ready-connected decentralised interface stations with proportional mix controlled hot water preparation and provision of heating to living areas as wall-mounted system. The LogoComfort 500 and 600 are available with static heating circuit (or can be fitted with optional mixed circuit via additional module) and the LogoComfort 600+ with a direct mixed circuit.

The option of a project or building related individual configuration by means of the model management (element system) is shown in our separate product catalogue.

LogoComfort 500 & 600		WW-Output		Fig.	Art. No.
		l/min ¹	kW ¹ l/min. ² kW ²		
500	stat. Heating circuit (st. HK)	12	35 15 37	Fig. 1	AI-11204.8
600	stat. Heating circuit (st. HK)	17	46 20 50	Fig. 2	AI-11104.21
600+	mixed circuit (MK)	12	35 15 37	Fig. 3	AI-11104.31
600+	mixed circuit (MK)	17	46 20 50		AI-11104.33

1) specifies at a flow line temperature of 65 °C and a heating by 40 K

2) specifies at a flow line temperature of 65 °C and a heating by 35 K

LogoComfort 500 & 600 Accessories			Fig.	Art. No.
600	Ball valves	Ball valves 7 x DN 20 straight with sensor mounting WMZ, TW ball valves DVGW tested.		AI-10252.32
500	Wall- & flush-mounted	Ball valves 7 x DN 20 straight with sensor mounting WMZ, TW ball valves DVGW tested.	Fig. 4	AI-10203.160
600	Mounting rail			AI-10203.158
600+				AI-10203.186
Rinsing hose for flushing network – 3/4" x 500 mm				AI-4325.1227.50
Rinsing hose connections – MS flat-sealing 3/4"				AI-43.66124 D

LogoComfort 600 - connection sets for manifolds as mixer circuit for flow line temperature control*			Fig.	Art. No.
Mixer circuit including thermostatic valve ((M) 13HE)	up to 10 heating circuits		Fig. 5	AI-10512.2
	11 up to 12 heating circuits			AI-10512.23
Mixer circuit with controlled servomotor (M 27HE)	up to 10 heating circuits		Fig. 6	AI-10512.21
	11 up to 12 heating circuits			AI-10512.24
Mixer circuit with servomotor (M 12HE) **	up to 10 heating circuits		Fig. 6	AI-10512.22
	11 up to 12 heating circuits			AI-10512.25

*) with HE pump Alpha2 15-60 and additional connection for static heating circuit **) Activation of the mixed circuit requires an external controller. Options for this can be found under "control and activation accessories". **Information note:** Mixed circuit applications are possible here only for the LogoComfort 600!



Fig. 4



Fig. 5



Fig. 6

LogoComfort 500, 600 & 600+

**NEW!**

Also available as
complete station
and with stainless
steel-soldered
heat exchanger

1

LogoComfort 500 / 600 – Kit features		LogoComfort		
		500	600	600+
Dimensions (Dimensions of the housing must be taken into account)	Width in mm	500	600	
	Height in mm		800	
	Depth ¹ in mm		150 – 220	
Connections below			3/4"	
Max. pressure: Heating / Sanitary			PN10 / PN10	
Max. permissible temperatures: Heating / Sanitary			110 °C / 110 °C	
Heating capacity (at 20 K)			10 kW	
Stainless steel plate heat exchanger (copper soldered), Vertical orientation for reduced risk of lime scale			✓	
PF-controller with priority switch, anti-lime scale coating and DVGW approval			✓	
Control valve for heating water (zone valve for connection to living space control)			✓	
Venting with hose connection on heating side			✓	
Adaptor for heat flow meter 3/4" × 110 mm			✓	
Throttle plate			✓	
Pipework made from insulated stainless steel corrugated pipe			✓	
Assembled and tested on base plate completely free of mechanical stress			✓	
Dirt traps with stainless steel sieve insert and drainage function		2		1
second KW connection for residences			✓	
Cold water meter adaptor 3/4" × 110 mm			✓	
Heat retention function of the primary heating-circuit water intake via an adjustable circulation bridge (35-65 °C)			✓	
Differential pressure regulator – Balancer (control range 10 – 40 kPa) for autom. hydr. Station balance			✓	

Optional accessories for each station available from the Model management	500	600	600+
Stainless steel soldered heat exchanger for potable water with high conductivity	-	optional	
Scalding protection		optional	
Domestic water circulation (pre-installed ex-factory) with separate time control	-	optional	
Return line temperature limiter 45-65 °C		optional	
Mixer circuit with servomotor and HE pump UPM3 AUTO 15-70 ²	optional	optional	-
thermostatically controlled mixer circuit including HE pump UPM3 AUTO 15-70	optional	optional	-
in addition connection for stat. heating circuit only up to manifolds for 7 heating circuits, from 8 heating circuits only in connection with Basis 600		-	optional

1)

Depending on the kit
and housing type

2)

For activating the mixed circuit,
an external controller is needed.
Options for this can be found
under 'control and activation
accessories'.

Logotherm interface stations
with optional kits can be
configured for you on request.

LogoPack



1



Fig. 1



Fig. 2



Fig. 3



Fig. 4



Fig. 5

LogoPack are compact, ready-connected decentralised interface stations with proportional mix controlled hot water preparation and provision of heating to living spaces as system for riser circuit assembly where space is limited (shaft assembly).

LogoPack Complete	WW-Output				Fig.	Art. No.
	l/min ¹	kW ¹	l/min. ²	kW ²		
Type C	12	35	15	37	Fig. 1	AI-10260.24LPFOR
Type C1	12	35	15	37	Fig. 2	AI-10260.26LPOR

LogoPack - Kit features		Complete	
		Type C	Type C1
Dimensions	Width in mm	430	365
	Height in mm	500	
	Depth in mm	200	245
Axial distance risers (VL & RL)		170	90
Connections for risers		1 1/2" AG	
Connections for sanitary (flat-sealing)		3/4" AG	
Connections for dwelling heating circuit		1/2" AG	
Max. pressure: Heating/ Sanitary		PN10/ PN10	
Max. permissible temperatures: Heating/ Sanitary		110 °C/ 110 °C	
Heating capacity (at 20 K)		10 kW	
Stainless steel plate heat exchanger (copper soldered), vertically oriented for reduced risk of lime scale		✓	
PF-controller with priority switch, Anti-lime scale coating and DVGW approval		✓	
Control valve for heating water (Zone valve for connection to living space control)		✓	
Venting with hose connection on heating side		✓	
Adaptor for heat flow meter 3/4" x 110 mm		✓	
Throttle plate		✓	
Pipework made from insulated stainless steel corrugated pipe		✓	
Integrated flow line and return line risers made of insulated stainless steel corrugated pipe		✓	
completely assembled and tested		✓	
Dirt traps with stainless steel sieve insert		✓	

LogoPack Complete - Accessories			
Short end sections as circuit termination	with bleed valves above	Fig. 3	AI-10522.2
	with circulation bridge (35–65 °C)	Fig. 4	AI-10523.2
Union fittings	1 item of LogoPack [DN] 32 on corrugated pipe DN 32 (Fixlock)	AI-E-10200.1	
	Half-shell pair on FixLock DN 32 for devices of 11/96	AI-90180.1	
	1 item of LogoPack [DN] 40 on corrugated pipe DN 40 (incl. half-shell)	AI-E-46119.7	
Differential pressure regulator (Balancer), 0.5 m pilot line, return ball valve with Pilot line connection	Set DN 20 for Single connection	Fig. 5	AI-18120
	Set DN 32 for max. 5 stations		AI-18140

All stations are available as required with nickel soldered heat exchanger. Prices and article numbers provided on request. Further complementary and additional products (e.g. cladding, metering devices for consumption metering, etc.) can be found on the following pages or in the Table of Contents on page 10 or the Chapter Overview on page 15.

LogoVital



Fig. 1



Fig. 2

LogoVital are compact, ready-connected decentralised interface stations with proportional mix controlled hot water preparation as wall-mounted system. These interface stations are also available with high outputs for hot water preparation, in order to ensure greater comfort and convenience.

LogoVital	l/min ¹	WW-Output kW ¹	l/min. ²	kW ²	Fig.	Art. No.
Type 1	12	35	15	37	Fig. 1	AI-10231.35WWB
Type 2	17	46	20	50		AI-10231.41WWB
Type 3 excluding domestic water circulation	24	65				AI-10231.49
Type 4 including domestic water circulation*	24	65			Fig. 2	AI-10231.50

LogoVital – Kit features		Type 1 35	Type 2 46	€/item	Type 3 65	Type 4 65
Dimensions (Dimensions of the housing must be taken into account)	Width in mm	298	428		580	
	Height mm	391	528		925	
	Depth ³ in mm	170	190		150 – 220	
Connections – cold water/hot water and circulation (where provided) below		3/4"			3/4"	
Connections – flow and return line Building mains connection below		3/4"			1"	
Max. pressure: Heating / Sanitary		PN10 / PN10			PN10 / PN10	
Max. permissible temperatures: Heating / Sanitary		110 °C / 110 °C			110 °C / 110 °C	
Stainless steel plate heat exchanger (Copper soldered), vertically oriented for reduced risk of lime scale		1			2	
PF-controller with priority switch, Anti-lime scale coating and DVGW approval		1			2	
Venting with hose connection on heating side		✓			✓	
Adaptor for heat flow meter 1" × 130 mm		–			✓	
Throttle plate		✓			✓	
Pipework made from insulated stainless steel corrugated pipe		✓			✓	
Completely free of mechanical stress assembled and tested on base plate		✓			✓	
Dirt traps with stainless steel sieve insert		✓			✓	
Cold water meter adaptor 3/4" × 110 mm		AI-10252.51			✓	
Adjustable circulation bridge (35 – 65 °C)		AI-10252.22 AI-10252.23			available with/without	
Differential pressure regulator – Balancer (control range 10 – 40 KPa) for autom. hydr. Station balance					✓	
Domestic water circulation with separate time control, heat exchanger insulation and adjustable circulation bridge (35-65 °C) for heat retention in the primary heating circuit		AI-10252.44	AI-10252.45			
Domestic water circulation (pre-installed ex-factory with separate time control					✓	

LogoVital – Accessories			
Type 1 & Type 2	Ball valves	4 × DN 20 straight	AI-10252.3
Type 3 & Type 4	TW ball cocks DVGW tested.	3 × DN 20 & 2 × DN 25 straight	AI-10252.341
Type 1 & Type 2	Scalding protection (thermal Water mixer (adjustment range 35-60 °C) for WW limiting, max. 10 bar, 3/4" AG		Fig. 3 AI-69050.9



Fig. 3

LogoAktiv

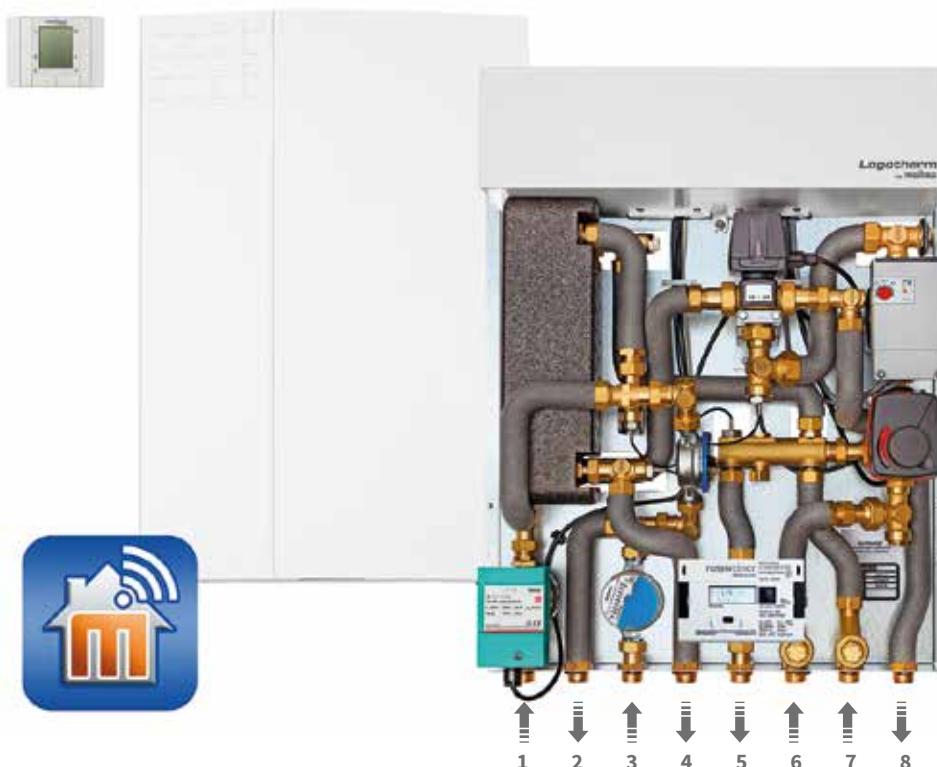


1

LogoAktiv are efficient, compact and ready-connected decentralised interface stations with electronically controlled hot water preparation precise to one degree for achieving the most modern hygienic standards as well as for the provision of heating to living areas as a wall-mounted system. In order to boost effectiveness, modern components such as high-efficiency pumps and processor controlled system controllers are used.

The use of a primary supply pump inside each LogoAktiv provides additional advantages apart from the hydraulic. For example, the supply pump and control valves for the hydraulic balance in the relevant line can be omitted, insofar as no other client has to be supplied from this circuit.

By means of the integrated system controllers with multiple communication options, LogoAktiv can be combined with standard building management systems and can optionally be controlled, depending on the equipment (with applications of other hardware components and communication modules), with various mobile end devices.



Legend:

- | | | |
|---|---------------------------------------|-----------------------------------|
| 1) domestic water circulation | 2) residential cold water | 3) cold water building connection |
| 4) residential hot water | 5) return line circuit | 6) flow line circuit |
| 7) return line dwelling heating circuit | 8) flow line dwelling heating circuit | |

The controls and activation technology of the LogoAktiv is not affected by potable water with a high hardness rating, as no sensitive mechanical components are included in the cold water.

Further advantages of LogoAktiv for greater efficiency and convenience:

- optimal heating of the individual spaces according to individually selectable time programme
- weather-controlled control of the flow line temperature (optional outside temperature sensor required)
- precise metering of energy consumption by means of optional integrated heat flow meter
- quick switch to hot water preparation on turning on tap
- precisely adjustable hot water temperature independent on draw-off volume
- hygienically safe hot water preparation in flow-through operation
- can be combined with regenerative energy systems
- product-dependent also available with integrated underfloor heating function

LogoAktiv



Fig. 1

1)
specifies at a flow line
temperature of 65 °C and
heating by 40 K

2)
depending on the kit
and housing type

Further complementary and
additional products
(e.g. cladding, underfloor
manifolds, metering devices for
consumption metering, control
accessories, etc.) can be found
on the following pages or are
shown in the Table of Contents
on page 10 or the Chapter
Overview on page 15.



Fig. 2

Aktiv Plus Complete	WW-Output		Fig.	Art. No.
	l/min ¹	kW ¹		
35 - including domestic water circulation	12	35		AI-14001.11 ZEH
50 - with domestic water circulation	18	50		AI-14002.11 ZEH
70 - including domestic water circulation	26.5	70	Fig. 1	AI-14003.11 ZEH

LogoAktiv – Kit features		Complete		
		35	50	70
Dimensions	Width in mm	600		
(Dimensions of the housing must be taken into account)	Height in mm	800		1,000
	Depth² in mm	170 – 220		190 – 220
Connections below		3/4"		1"
Max. pressure: Heating / Sanitary		PN6 / PN6		
Max. permissible temperatures: Heating / Sanitary		95 °C / 95 °C		
Power supply		230 V / 50 Hz		
Heating capacity (at 20 K)		20 kW		
Stainless steel plate heat exchanger (copper soldered), vertically oriented for reduced risk of lime scale		✓		
Venting with hose connection on heating side		✓		
Adaptor for heat flow meter		3/4" × 110 mm	1" × 130 mm	
Pipework made from insulated stainless steel corrugated pipe		✓		
Completely free of mechanical stress assembled and tested on base plate		✓		
2 dirt traps with stainless steel sieve insert		✓		
Second kW connection for residences		✓		
Cold water meter adaptor		✓		
Domestic water circulation		available with/without		
Primary high-efficiency pump Wilo Stratos-Para 15 /1-7		✓		
Primary mixing valve		✓		
Primary switching valve		✓		
electronic control with control unit for hot water and heating circuit controller		✓		
RS-485 interface for communication (Protocol: Modbus RTU) for internal control		✓		
Ethernet interface (RJ45) for optional remote access		✓		
Flow rate sensor & temperature sensor		✓		
Actuation of an additional heating circuit via external pump group		✓		
Connection of additional communications module (e.g. M-bus) possible on request		✓		

LogoAktiv - Accessories			Fig.	Art. No.
35 & 50	Ball valves with sensor mounting WMZ. TW ball valves DVGW tested	8 × DN 20 straight	Fig. 2	AI-10252.33
35 & 50	Wall- & flush-mounted mounting rail incl. ball valves, TW-ball valves DVGW tested	8 × DN 20 straight		AI-10203.136
70	Ball valves with sensor mounting WMZ. TW ball valves DVGW tested	7 × DN 25 & 1 × DN 20 (circulation) straight		AI-10252.37
35; 50 & 70	M-bus module for extending the LogoAktiv Plus. The module provides a connection option for M-bus capable station heat flow meters and water meters. Using this, the metering and presentation of consumption data can be conducted via the LogoAktiv controller.			AI-10579.004

Complete stations LogoMatic KS 600 & 600+



1



Fig. 1

The complete stations LogoMatic KS 600 and 600+ are compact, ready-connected decentralised interface stations with electronically controlled hot water preparation. Provision of heating to living areas as wall-mounted system incl. housing as well as ball valve connection set, in order to allow you a simple selection, fast delivery and also simple operation.

The LogoMatic KS 600 is available with static heating circuit, the LogoMatic KS 600+ with a direct mixed circuit (MK) plus 6 underfloor manifolds or with a direct mixed circuit and 8 underfloor manifolds and a second static heating circuit.

The LogoMatic KS 600+ always includes the **integrated weather-controlled heating circuit controller and the underfloor heating function**, in order to ensure maximum comfort and convenience.

LogoMatic KS complete station is available as wall-mounted (AP) or flush-mounted version (UP) as well as with brazed heat exchanger (CU) or stainless steel soldered heat exchanger (ES).



Fig. 2

Complete stations LogoMatic KS		WT	Installation type	WW-Output	Fig.	Art. No.
		CU / ES	AP / UP			
600 RH-AP	stat. Heating circuit	CU	AP	17' - 20' l/min. & 46' - 50' kW	Fig. 1	AI-11114 HKAP
600 RH-UP	(st. HK)	CU	UP			AI-11114 HKUP
600+ FBH-AP	Mixed circuit (MK)	CU	AP		Fig. 2	AI-11114.6 MKAP
600+ FBH-UP	with 6 manifolds	CU	UP			AI-11114.6 MKUP
600 FBH/RH-AP	MK with 8 manifolds	CU	AP		Fig. 3	AI-11114.8 MKAP
600 FBH/RH-UP	& st. HK	CU	UP			AI-11114.8 MKUP
600 RH-AP	stat. Heating circuit	ES	AP			AI-11114 HKAPES
600 RH-UP	(st. HK)	ES	UP			AI-11114 HKUPES
600+ FBH-AP	Mixed circuit (MK)	ES	AP			AI-11114.6 MKAPES
600+ FBH-UP	with 6 manifolds	ES	UP			AI-11114.6 MKUPES
600 FBH/RH-AP	MK with 8 manifolds	ES	AP			AI-11114.8 MKAPES
600 FBH/RH-UP	& st. HK	ES	UP			AI-11114.8 MKUPES

- 1) Specifies at a flow line temperature of 65 °C and heating by 40 K
2) Specifies at a flow line temperature of 65 °C and heating by 35 K



Fig. 3

LogoMatic 600 & 600+ Accessories	Art. No.
Service display for configuration and monitoring of settings and parameters, incl. connection cable and 4-pin connection plug, 4.3" colour touchscreen with graphic operating surface, simple and intuitive menu, for implementing parameter backup and software updates via integrated SD cards-slot	AI-10576.701

Complete stations LogoMatic KS 600 & 600+



NEW!

Complete stations
also with stainless
steel soldered
heat exchanger!

LogoMatic KS complete station 600 / 600+ Kit features		Complete		
		600 RH	600+ FBH	600 FBH/RH
Dimensions in mm (AP version)	Width	600	600	600
	Height	900	1300	1300
	Depth	210	210	210
Dimensions in mm (UP version)	Width (front cover size, aperture size larger)	610	610	610
	Height (front cover size, without height-adjustable feet)	953	1327	1327
	Depth (adjustable)	110-160	160-210	160-210
Connections below		3/4"		
Max. pressure: Heating / Sanitary		6 bar / PN10		
Max. permissible temperatures: Heating / Sanitary		95 °C / 95 °C		
Heating capacity (at 20 K)		10 kW		
Power supply		230 V / 50 Hz		
Min. Operating pressure for sanitary		1 bar		
Max. Differential pressure - Heating (primary)		4.5 bar		
Pre-set tap temperature for hot water (Recommendation DVG ^w W551) ¹		50 °C ¹		
static heating circuit (st. HK)		✓	-	✓
Mixer circuit with servomotor, HE pump UPM3 AUTO 15-70 GMBP3		-	✓	✓
Underfloor manifolds with 6 outlet pieces (3/4" AG Euro cone, 0.5-5 l/min, 6 bar)		-	✓	-
Underfloor manifolds with 8 outlet pieces (3/4" AG Euro cone, 0.5-5 l/min, 6 bar)		-	-	✓
electronic rapid & constantly regulating three-way control valve with control adaptive priority switch for hot water and function display (LEDs)		✓		
constant WW outflow temperatures, also for changing primary (e.g. summer/winter operation) or cold water temperatures		✓		
Low return line temperatures through electronic Regulation of the primary energy supply		✓		
Weather-controlled heating circuit controller (Optional: an active outside sensor for several stations can be used)		-	-	✓
Flow switch		✓		
Flow-through sensor for exact quantity-based hot water preparation		✓		
Stainless steel plate heat exchanger, Vertical orientation for reduced risk of lime scale		✓		
Control valve - Heating (zone valve for connection to living space control)		✓		
Venting with hose connection on heating side		✓		
Adaptor for heat flow meter 3/4" × 110 mm		✓		
Pipework made from insulated stainless steel corrugated pipe		✓		
Assembled and tested on base plate completely free of mechanical stress		✓		
Dirt traps with stainless steel sieve insert (incl. drainage function)		✓		
second KW connection for residences		✓		
Cold water meter adaptor 3/4" × 110 mm		✓		
Heat retention function of the primary heating-circuit water intake via an adjustable circulation bridge (35-65 °C)		✓		
Differential pressure regulator/balancer (control range 10-40 kPa) for automatic hydraulic Station balance		✓		
Throttle plate		✓		
7 ball valves DN20 with sensor mounting for WMZ. TW ball valves DVGW tested		✓		
Wall-mounted housing made of painted steel (RAL 9016)		see identification marking AP		
Flush-mounted housing made of painted steel (RAL 9016)		see identification marking UP		
Height-adjustable feet (100 – 170 mm)		see identification marking UP		

1)

Pre-set values changeable as
required via
customer service.

Logotherm interface stations
with optional kit are
configurable on request.



The controls and
activation technology
of the LogoMatic is not
affected by potable water
with high hardness rating,
as no sensitive mechanical
components are included
in the cold water, and has
an integrated weather-
controlled heating circuit
controller and underfloor
heating function.

LogoMatic Comfort Series



LogoMatic are efficient, compact and ready-connected decentralised interface stations with electronically controlled hot water preparation for achieving the most modern hygienic standards as well as for the provision of heating to living spaces as a wall-mounted system.

The LogoMatic Comfort Series comes in 3 major models:

1. the LogoMatic Comfort 600 with static heating circuit and many functions and
2. the LogoMatic Comfort 600+ with integrated mixed circuit for underfloor heating and
3. the LogoMatic Comfort 600+ with an additional static heating circuit.

The LogoMatic Comfort 600+ always includes the **integrated weather-controlled heating circuit controller and the underfloor heating function**, in order to ensure maximum possible comfort and convenience.



Fig. 1



Fig. 2



Fig. 3

LogoMatic Comfort 600 & 600+		l/min ¹		WW-Output kW ¹ l/min. ² kW ²		Fig.	Art. No.
600	stat. Heating circuit (st. HK)	12	35	15	37		AI-11114.11
600	stat. Heating circuit (st. HK)	17	46	20	50	Fig. 1	AI-11114.1
600+	mixed circuit (MK)	12	35	15	37		AI-11114.21
600+	mixed circuit (MK)	17	46	20	50	Fig. 2	AI-11114.2
600+	MK + 2. stat. Heating circuit	12	35	15	37		AI-11114.31
600+	MK + 2. stat. Heating circuit	17	46	20	50		AI-11114.3

1) specifies at a flow line temperature of 65 °C and a heating by 40 K (ex-factory setting)

2) specifies at a flow line temperature of 65 °C and a heating by 35 K (indicate on ordering)

LogoMatic Comfort 600 & 600+ Accessories			Fig.	Art. No.
600 & 600+	Ball valves	Ball valves 7 x DN 20 straight with sensor mounting WMZ, TW ball valves DVGW tested.		AI-10252.32
600	Wall- & flush-mounted	Ball valves 7 x DN 20 straight with sensor mounting WMZ, TW ball valves DVGW tested.	Fig. 3	AI-10203.181
600+	Mounting rail			
Rinsing hose for flushing network – 3/4" x 500 mm				AI-4325.1227.50
Rinsing hose connections – MS flat-sealing 3/4"				AI-43.66124 D
Scalding protection (thermal Water mixer (Adjustment range 35 – 60 °C) for WW limiting, max. 10 bar, 3/4" AG				AI-69050.9

Service display for configuration and monitoring of settings and parameters, incl. connection cable and 4-pin connection plug, 4.3" colour touchscreen with graphic operating surface, simple and intuitive menu, for implementing parameter backup and software updates via integrated SD cards-slot

AI-10576.701

Optional accessories available via model management	600	600+
Stainless steel soldered heat exchanger for potable water with high conductivity		optional
Scalding protection		optional
Domestic water circulation (pre-installed ex-factory) with separate time control		optional
Return line temperature limiter 45-65 °C		optional

Information note: Logotherm interface stations with optional kits can be configured on request.

LogoMatic Comfort Series



NEW!
also as complete
station and with
stainless steel-
soldered heat
exchanger

LogoMatic – Kit features		Complete	
		Comfort 600	Comfort 600+
Dimensions	Width in mm	600	
(Dimensions of the housing must be taken into account)	Height in mm	750	
	Depth in mm	110 – 220	
Connections below		3/4"	
Max. pressure: Heating / DHW		6 bar / 10 bar	
Max. permissible temperatures: Heating / DHW		95 °C / 95 °C	
Power supply		230 V / 50 Hz	
Min. Operating pressure for DHW		1 bar	
Max. Differential pressure - Heating (primary)		4.5 bar	
Heating capacity (at 20 K)		10 kW	
Pre-set tap temperature for hot water (Recommendation of DVGW W551) ¹		50 °C ¹	
electronic rapid & constantly regulating three-way control valve with control adaptive priority switch for hot water and function display (LEDs)		✓	
constant WW outflow temperatures, also for changing primary (e.g. summer/winter operation) or Cold water temperatures		✓	
Low return line temperatures through electronic Regulation of the primary energy supply		✓	
Weather-controlled heating circuit controller (Optional: an active outside sensor for several stations can be used)		-	✓
Flow switch		✓	
Flow-through sensor for precise quantity-based hot water preparation		✓	
Stainless steel plate heat exchanger (copper soldered), vertically oriented for reduced risk of lime scale		✓	
Zone valve for dwelling heating circuit		✓	
Venting with hose connection on heating side		✓	
Adaptor for heat flow meter 3/4" × 110 mm		✓	
Pipework made from insulated stainless steel corrugated pipe		✓	
Assembled and tested on base plate completely free of mechanical stress		✓	
Dirt traps with stainless steel sieve insert (incl. drainage function with Comfort & Comfort+)		2	1
second KW connection for residences		✓	
Cold water meter adaptor 3/4" × 110 mm		✓	
Heat retention function of the primary heating-circuit water intake via an adjustable circulation bridge (35-65 °C)		✓	
Differential pressure regulator for autom. hydr. Station balance		✓	
Control range of the differential pressure regulator (Balancer)		10 – 40 KPa	
static heating circuit (st. HK)		✓	available with & without
Mixer circuit with servomotor and HE pump UPM3 AUTO 15-70 GMBP3 (MK)		-	✓

1)

Pre-set values as required changeable via customer service or ex-factory.

Further complementary and additional products (e.g. cladding, underfloor manifolds, metering devices for consumption metering, control accessories, etc.) can be found on the following pages or in the Table of Contents on page 10 or the Chapter Overview on page 15.



The controls and activation technology of the LogoMatic is not affected by potable water with high hardness rating, as no sensitive mechanical components are included in the cold water, and has an integrated weather-controlled heating circuit controller and underfloor heating function.

LogoEco Compact E



LogoEco Compact E HW and LogoEco E H-HW are efficient, compact and ready-connected decentralised interface stations with electronically controlled hot water preparation for achieving the most modern hygienic standards and as wall-mounted system. In addition, the LogoEco E H-HW offers provision of heating to living areas.

1



Fig. 1



Fig. 2

LogoEco Complete		WW-Output		Fig.	Art. No.
		l/min ¹	kW ¹		
LogoEco	Compact E HW	10	35	Fig. 1	AI-11231.91
LogoEco	E H-HW	10	35	Fig. 2	AI-11253.91
Eco	HW: Wall-mounted mounting rail incl. ball valves 2 × DN 20 straight				AI-11231.911
Eco	H-HW: Wall-mounted mounting rail incl. ball valves 4 × DN 20 straight				AI-11253.911

LogoEco – Kit features		LogoEco HW	LogoEco H-HW
Dimensions	Width in mm	255	570
	Height in mm	415	390
	Depth in mm	125	170
Connections below		3/4"	3/4"
Max. pressure: Heating / Sanitary		16 bar / 10 bar	10 bar / 10 bar
Max. permissible temperatures: Heating		90 °C	95 °C
Power supply		100 – 230 V	100 – 230 V
Min. Operating pressure for sanitary		1 bar	1 bar
Max. Differential pressure - Heating (primary)		2.5 bar	2.5 bar
Pre-set tap temperature for hot water ²		55 °C ¹	55 °C ¹
Heating capacity (at 30 K)			21
hot water preparation		✓	✓
Heating			✓
electronically regulating two-way control valve for hot water preparation		✓	✓
electronically regulating two-way control valve for the dwelling heating circuit		–	✓
constant WW outflow temperatures also at changing primary temperatures (e.g. summer/ Winter operation) or cold water temperatures		✓	✓
Low return line temperatures through electronic regulation of the primary energy supply		✓	✓
Electric connection for living space control			✓
Heat retention function for the heat exchanger (40 °C – adjustable 25 – 60 °C)		✓	✓
Flow-through sensor for precise quantity-based hot water preparation		✓	✓
Stainless steel plate heat exchanger (copper soldered)		✓	✓
Adaptor for heat flow meter 3/4" × 110 mm		–	✓
Pipework made from	Copper (fixed pipe)	–	✓
	Stainless steel (fixed pipe)	✓	–
Completely free of mechanical stress assembled in housing and tested		✓	✓
Dirt traps with stainless steel sieve insert		–	✓
Differential pressure regulator for autom. hydr. Balance of the dwelling heating circuit		–	✓
Control range of the differential pressure regulator			5 – 25 KPa
Surface-mounted cover (EPP – black)		✓	✓

1)

specifies at a flow line temperature of 65 °C and a heating by 45 K (ex-factory setting)

2)

Pre-set values as required changeable via customer service.

Further complementary and additional products (e.g. metering devices for consumption metering, control accessories, etc.) can be found on the following pages or are shown on the table of contents on page 10 or the Chapter Overview on page 15.

Floor distributors

All the underfloor manifolds listed here are pre-assembled on a base plate and equipped with the heating circuits indicated below. The price list shows interface stations for 4 types of underfloor manifold.

1



Fig. 1



Fig. 2



Fig. 3

Number Heating circuits	LogoAktiv	LogoComfort	LogoMatic Comfort+	LogoComfort	Type	Fig.	Art. No.
	35 & 50	600+	600+	600			
3	✓				A		AI-10514.1
		✓	✓	✓	B		AI-M14
				✓	E		AI-10512.3
4	✓				A		AI-10514.2
		✓	✓	✓	B		AI-M15
				✓	E		AI-10512.4
5	✓				A		AI-10514.3
		✓	✓	✓	B		AI-M16
				✓	E		AI-10512.5
6	✓				A		AI-10514.4
		✓	✓	✓	B	Fig. 1	AI-M17
				✓	E		AI-10512.6
7	✓				A		AI-10514.5
		✓	✓	✓	B		AI-TS-11301.17
				✓	E		AI-10512.7
8		✓	✓		B		AI-TS-11301.18
				✓	E		AI-10512.8
9				✓	E	Fig. 2	AI-10512.9
10				✓	E		AI-10512.10
11				✓	E	Fig. 3	AI-10512.31
12				✓	E		AI-10512.32

Underfloor manifolds		Type A	Type B	Type E
Dimensions in mm (Dimensions of the housing must be taken into account)	Width	600		792
	Height	450		500
Connection to the heating circuits		3/4" AG - Euro cone		
Orientation of the supply connections depending on:		above		on the side
Material of heat distributor		Stainless steel		
Control range of flow rate limiter		0.5 – 5 l/min.		
Max. Pressure level		6 bar		
Zone valve integrated		✓		
Valve inserts M30 x 1.5 with manually adjustable flaps			✓	

Cladding

The claddings listed are available as wall-mounted or flush-mounted models and also for use as remote read-out for consumption metering with radio transmission. Cladding: Painted steel in white (RAL 9016) and plastic screen in white (RAL 9016) for remote applications¹.

Cladding, wall-mounted models

Type	with door	long ²	Remote ¹	Logo Aktiv	Logo Comfort	Logo Pack	Logo Matic	Logo Vital	
				35 & 50	70	500	600	600+	C
									C1
									600
									600+
									35
									46
									65
Wall-mounted									
for manifolds									

1) Housing with option for remote read-out of consumption metering through plastic insert
2) Height ≥ 1,000 mm



Fig. 1



Fig. 2



Fig. 3

	Dimensions (mm)					
	Width	Height	Depth	Fig.	Art. No.	
	310	500	170	Fig. 1	AI-10203.132	
	440	637	190		AI-10203.133	
	500	800	210	Fig. 2	AI-11200.1	
	500	1,000	210		AI-11200.1L	
	600	880	210		AI-11100.9	
	600	1,000	210		AI-11200.2L	
	600	870	195	Fig. 3	AI-10203.512	
	600	800	210		AI-11100.1	
	850	1,210	210	Fig. 4	AI-11100.73	
	850	1,210	210		AI-11100.77	
	500	800	210		AI-11200.1K	
	500	1,000	210	Fig. 5	AI-11200.1KL	
	600	880	210		AI-11100.9K	
	600	1,000	210		AI-11200.2KL	
	600	800	210		AI-11100.1K	
	600	935	210		AI-10203.185	
	600	935	210		AI-10203.185K	
	600	400	210	Fig. 6	AI-11100.5	
	600	410	210		AI-10203.186	



Fig. 4



Fig. 5



Fig. 6

Cladding

The claddings listed are available as wall-mounted or flush-mounted models and also for use as remote read-out for consumption metering with radio transmission. Cladding: Painted steel in white (RAL 9016) and plastic screen in white (RAL 9016) for remote applications¹.

Cladding, flush-mounted models

Type	with door	long ²	Remote ¹	Logo Aktiv		Logo Comfort			Logo Pack		Logo Matic		Logo Vital		
				35 & 50	70	500	600	600+	C	C1	600	600+	35	46	65
Flush-mounted		✓		✓			✓	✓							
		✓			✓		✓	✓							✓
		✓					✓								✓
		✓					✓								✓
		✓	✓			✓									
		✓	✓	✓			✓	✓							
Flush-mounted (wall-mounted completely closed)		✓					✓	✓							
		✓					✓	✓						✓	
			✓				✓	✓							
		✓	✓				✓	✓							
			✓				✓	✓			✓	✓			
		✓	✓				✓	✓			✓	✓			
Inspection frames	✓					✓				✓			✓		
	✓						✓	✓		✓				✓	
	✓			✓	✓		✓					✓			✓
	✓		✓			✓	✓	✓		✓			✓	✓	
	✓		✓	✓	✓		✓					✓			✓
	✓		✓	✓	✓		✓	✓							✓
Height-adjustable Feet (100-170 mm) for UP covers				✓	✓		✓	✓			✓	✓			✓
							✓							✓	

1) Housing with option for remote read-out of consumption metering through plastic insert

2) Height ≥ 1,000 mm



Fig. 1



Fig. 2

	Dimensions (mm)			Fig.	Art. No.	
	Width	Height	Depth			
	610	1,260	150 – 220	Fig. 1	AI-11100.8	
	610	835	150 – 220	Fig. 3	AI-11100.2	
	610	1,175	150 – 220		AI-11100.4	
	825	1,175	150 – 220		AI-11100.72	
	825	1,175	150 – 220	Fig. 2	AI-11100.76	
	510	835	150 – 220		AI-11200.2K	
	610	1,260	150 – 220		AI-11100.8K	
	610	835	150 – 220		AI-11100.2K	
	610	1,175	150 – 220		AI-11100.4K	
	610	835	150 – 210	Fig. 4	AI-11100.23	
	610	1,175	150 – 210		AI-11100.24	
	845	1,175	150 – 210	Fig. 5	AI-11100.25	
	460	720	190		AI-10203.548	
	610	835	150 – 210		AI-11100.23K	
	610	1,175	150 – 210		AI-11100.24K	
	610	935	110 – 160		AI-11100.38	
	610	935	110 – 160		AI-11100.38K	
	610	1,230	110 – 160		AI-11100.39	
	610	1,230	110 – 160		AI-11100.39K	
	400	600			AI-66200.6	
	500	800			AI-10203.317	
	500	600			AI-66200.7	
	600	800			AI-10203.309	
	600	1,150			AI-10203.312	
	500	800			AI-10203.317K	
	600	800		Fig. 6	AI-10203.309K	
	610	1,175			AI-10203.311K	
	510				AI-11200.21	
	610				AI-11100.21	
	825				AI-11100.71	
	460				AI-10203.549	



Fig. 3



Fig. 4



Fig. 5



Fig. 6

Control technology

1

The control technologies listed are possible room temperature controls for the most varied applications, such as single room control, temperature regulation for underfloor distribution etc. The combination options listed are mutually exclusive where applicable. For that reason, have the combination selected for your planned application confirmed by our specialist personnel.

Control technology for underfloor heating



Fig. 1



Fig. 2



Fig. 3



Fig. 4

Description	Re- mote	LogoAktiv		LogoComfort			LogoPack		LogoMatic		Fig.	Art. No.
		35/50	70	500	600	600+	C	C1	600	600+		
Room temperature sensor NI1000					✓	✓						AI-10560.141
Outside temperature sensor (IP54) PT1000									✓			AI-10560.34
Outside temperature sensor NTC, IP54 incl. connection plug		✓	✓									AI-10560.36
Electronic room temperature control 230V programmable, with 2 x 1.5 V backup batteries AA, Type Salus HTRP230 (ENEV conform for 2 sizes available)				✓	✓	✓	✓	✓	✓		1	AI-10561.31
Electronic room temperature control remotely programmable, with 2 x 1.5 V batteries AA Type Salus ERT 50 remote	✓				✓	✓						AI-10560.86
Terminal strip 230V (6 channels, max. 24 actuators)		✓	✓		✓	✓				✓	3	AI-10560.97
Terminal strip 230V with pump logic module (8 channels, max. 32 actuators)		✓	✓		✓	✓				✓		AI-10560.961
Bracket for terminal strip for device width from 600 mm		✓	✓		✓	✓				✓		AI-10203.021
Pump logic module		✓	✓		✓	✓				✓	2	AI-10560.99
Electrothermal actuator 230V (2-point), no current (NC)		✓	✓	✓	✓	✓	✓	✓	✓	✓	6	AI-10560.98
Electronic room temperature control 230V Type Salus RT 10		✓	✓	✓	✓	✓			✓	✓	4	AI-10560.95
STW as contact thermostat for temperature monitoring for surface heating circuit, concealed setting option (20-90 °C) incl. actuator 230V and zone valve		✓	✓								5	AI-10560.941
STW as contact thermostat for temperature monitoring for underfloor heating circuit concealed setting option (20-90 °C), 230V incl. electro thermal actuator 230V				✓	✓	✓	✓	✓		✓		AI-10560.94

1) Application only for mixed circuit with external actuation (M12HE)!

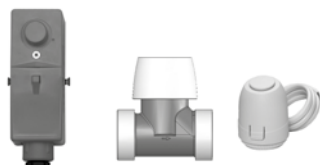


Fig. 5



Fig. 6

Control technology

1

Complete control sets, living area control device and actuator



Fig. 1



Fig. 2



Fig. 3

Description	Re- mote	LogoAktiv		LogoComfort			LogoPack		LogoMatic		Fig.	Art. No.
		35/50	70	500	600	600+	C	C1	600	600+		
Electronic room temperature control 230 V programmable, with 2 x 1.5 V backup batteries AA Type Salus HTRP230 (ENEV conform for 2 sizes available) incl. electrothermal actuator 230 V (2-point), closed currentless (NC)				✓	✓	✓	✓				1	AI-10561.3
Electronic remote room temperature regulation programmable, Type Honeywell CMS927 with battery operation (2 x 1.5 V AA) and suitable servomotor Honeywell HR92 (also 2 x 1.5 V AA)	✓			✓	✓	✓	✓				2	AI-10560.65
Electronic remote room temperature control programmable, Type Salus RT500RF (battery operated)	✓					✓						AI-10561.43
Electronic room temperature control 230 V programmable, Type Heimeier Thermostat P incl. electrothermal actuator 230 V (2-point) open currentless (NO)				✓	✓	✓	✓				3	AI-10560.7
Electronic room temperature control remotely programmable, with 2 x 1.5 V batteries AA, receiver, Type Salus ST 620 RF, actuator 230 V (2-point), closed currentless (NC)	✓			✓	✓	✓	✓				4	AI-10561.4
Internet thermostat, system IT500 with thermostat, wall-mounted installation kit, foot, receiver, gateway, ADSL cable and mains supply.	✓	✓	✓	✓	✓		✓	✓	✓	✓	5	AI-10561.5
Remote sensor IT300 incl. wall-mounted installation kit, for control of two heating areas and improving energy efficiency	✓	✓	✓	✓	✓		✓	✓	✓	✓	6	AI-10561.51



Fig. 4



Fig. 5



Fig. 6

LogoCool decentralised cooling station

NEW!
Up to 24 kW
Cooling
output

1

LogoCool is a new generation of compact, ready-connected residential transmission stations for the transmission of cooling energy in homes, apartments and commercial buildings and sheds. LogoCool meets the requirements with respect to efficient and simple application, determined by the continuous primary flow rate and thus the primary energy setting of the pressure-independent flow rate controller. The unique design of the hybrid housing results in effective protection at the application range from the environmental conditions (temperature and room humidity).



Fig. 1



Fig. 2

LogoCool – Kit features		LogoCool S Line	LogoCool M Line
Dimensions incl. housing	Width in mm	629	650
	Height in mm	675	879
	Depth in mm	263	334
Connections (VL & RL from primary & secondary circuit) / overpressure release pipe below		1"	1 1/4"
Max. pressure: Primary side / Secondary side		10 bar / 3 bar	
Insulated (30 mm) and powder-coated hybrid housing in multiple shell design with all-round hollow chamber sealing		✓	
Stainless steel plate heat exchanger (copper soldered)		✓	
Drainage and filling options for the secondary circuit		✓	
Circulation pump in the secondary circuit		✓	
Expansion vessel in the secondary circuit		✓	
Adaptor for compact heat/cold meter 1" x 130 mm		✓	
2 dirt traps with stainless steel sieve insert		✓	
Overpressure valve for secondary circuit		✓	
Adjustable flow rate controller (Nexus Valve Vivax)		✓	
Actuator (on/off)		✓	
Manometer secondary circuit		✓	
Pipework made from insulated stainless steel corrugated pipe		✓	
Assembled on base plate completely free of mechanical stress, placed in the hybrid housing and tested		✓	

Basic Complete	Cooling transmission output	Fig.	Art. No.
LogoCool S 1 – 5 kW	See output table		AI-10610.32
LogoCool S 2 – 12 kW	See output table		AI-10610.22
LogoCool S 5 – 16 kW	See output table	Fig. 1	AI-10610.12
LogoCool M 9 – 24 kW	See output table	Fig. 2	AI-10610.1

LogoCool decentralised cooling station

LogoCool S 1 – 5 kW

Sec.	Temp. VL	°C	8			10					10				
	Temp. RL	°C	14			14					16				
Pri.	Temp. VL	°C	5	6	7	5	6	7	8	9	5	6	7	8	9
	Temp. RL	°C	12.9	12.7	12.2	13.7	13.6	13.5	13.3	12.9	15.3	15.2	15.0	14.7	14.2
	Output	kW	4.2	3.7	2.8	3.9	3.9	3.5	2.9	2.1	5.5	4.9	4.3	3.6	2.8

LogoCool S 2 – 12 kW

Pri.	Temp. VL	°C	5	6	7	5	6	7	8	9	5	6	7	8	9
	Temp. RL	°C	12.4	12.1	11.5	13.5	13.3	13.2	12.9	12.6	14.9	14.7	14.5	14.2	13.6
	Output	kW	9.9	8.1	6.0	8.1	8.1	8.1	6.9	5.3	12.0	11.7	10.0	8.2	6.0

LogoCool S 5 – 16 kW

Pri.	Temp. VL	°C	5	6	7	5	6	7	8	9	5	6	7	8	9
	Temp. RL	°C	12.4	12.1	11.5	13.6	13.4	13.3	13.0	12.6	15.1	14.8	14.6	14.2	13.6
	Output	kW	16.0	14.5	10.5	10.7	10.7	10.7	10.7	8.5	16.0	16.0	16.0	14.5	11.0

LogoCool M 9 - 24 kW

Pri.	Temp. VL	°C	5	6	7	5	6	7	8	9	5	6	7	8	9
	Temp. RL	°C	12.5	12.1	11.5	-	13.5	13.3	13.0	12.5	15.2	14.8	14.5	14.2	13.6
	Output	kW	23.7	22.5	16.9	-	15.8	15.8	15.8	13.5	23.7	23.7	23.7	22.8	17.0

LogoCool Complete Accessories

Accessories for	Name	Model	Art. number
LogoCool S Line	Ball valves with Spindle extension	4× DN 25 straight	AI-10610.121

All data subject to a minimum residual delivery head on the secondary side of 3 mWS and a spread (primary to secondary) of 2 Kelvin.

Further complementary and additional products (e.g. metering devices for consumption metering, control accessories, etc.) can be found on the following pages or in the Table of Contents on page 10 or the Chapter Overview on page 15.