



MULTICAL® 403

Heat meter (E1)
8.2 °C...190 °C
400.2 K...178 K
8 e 2 °C...130 °C

CE M18 0200
DK-0200-14001-403



qp 1.5 m³/h
q₁₅ 15
q_{3.0} 3.0 m³/h

S/N: 71000098
Type: 403750318

GH8 (R4) c 160 mm
1-p 8.00 bar DN15
PR18; PS18
Class: 2 (E1, M2)
P200-0160751
Battery: 1 x D-cell

0030297
MWh





Cooling meter (E3)
6.2 °C...190 °C
260.2 K...178 K
8 e 2 °C...130 °C









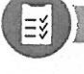




71000098

kamstrup

10012220113

	MULTICAL® 403
	> 60 °C
	230 VAC
	16/25/40 bar

	MULTICAL® 403
	04
	05
	07
	11
	14
	16
	19
	21
	22
	23



http://static.kamstrup.dk/hardlink/userguides/gb_mc403.htm



<http://products.kamstrup.com/?goto=584>



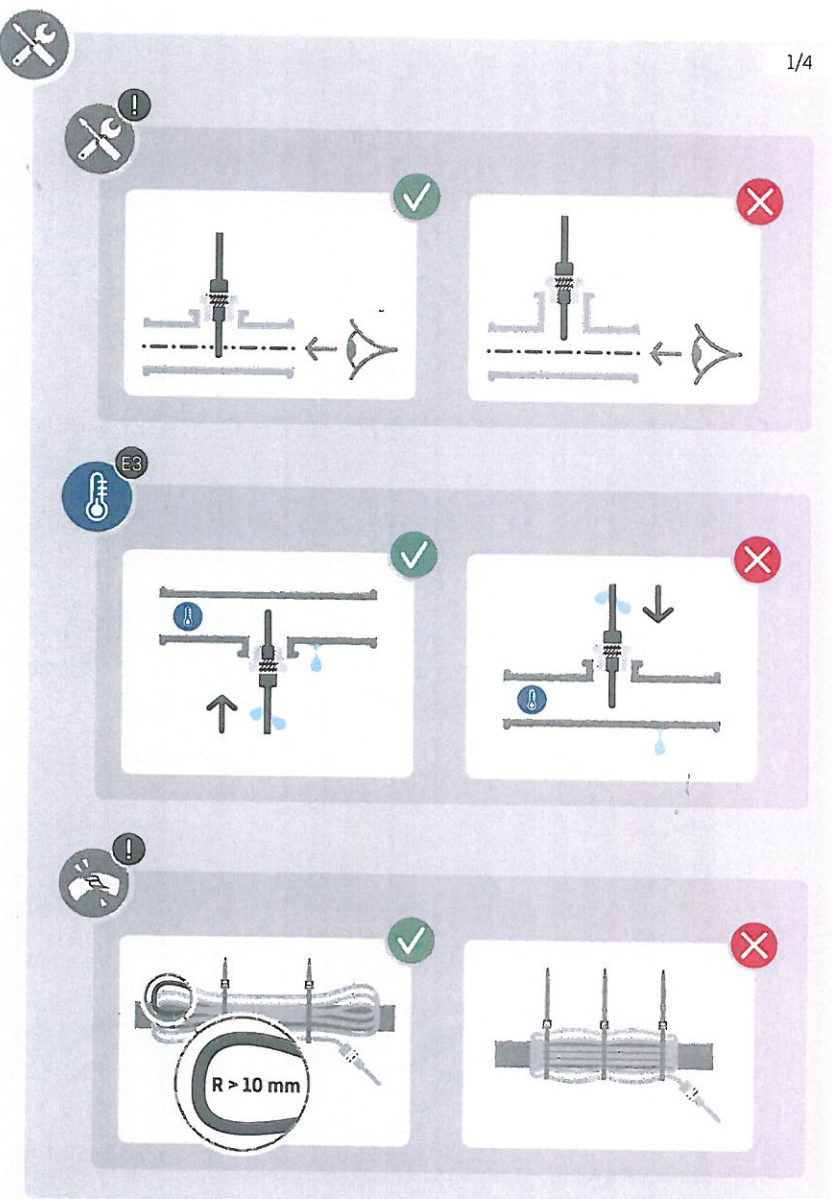
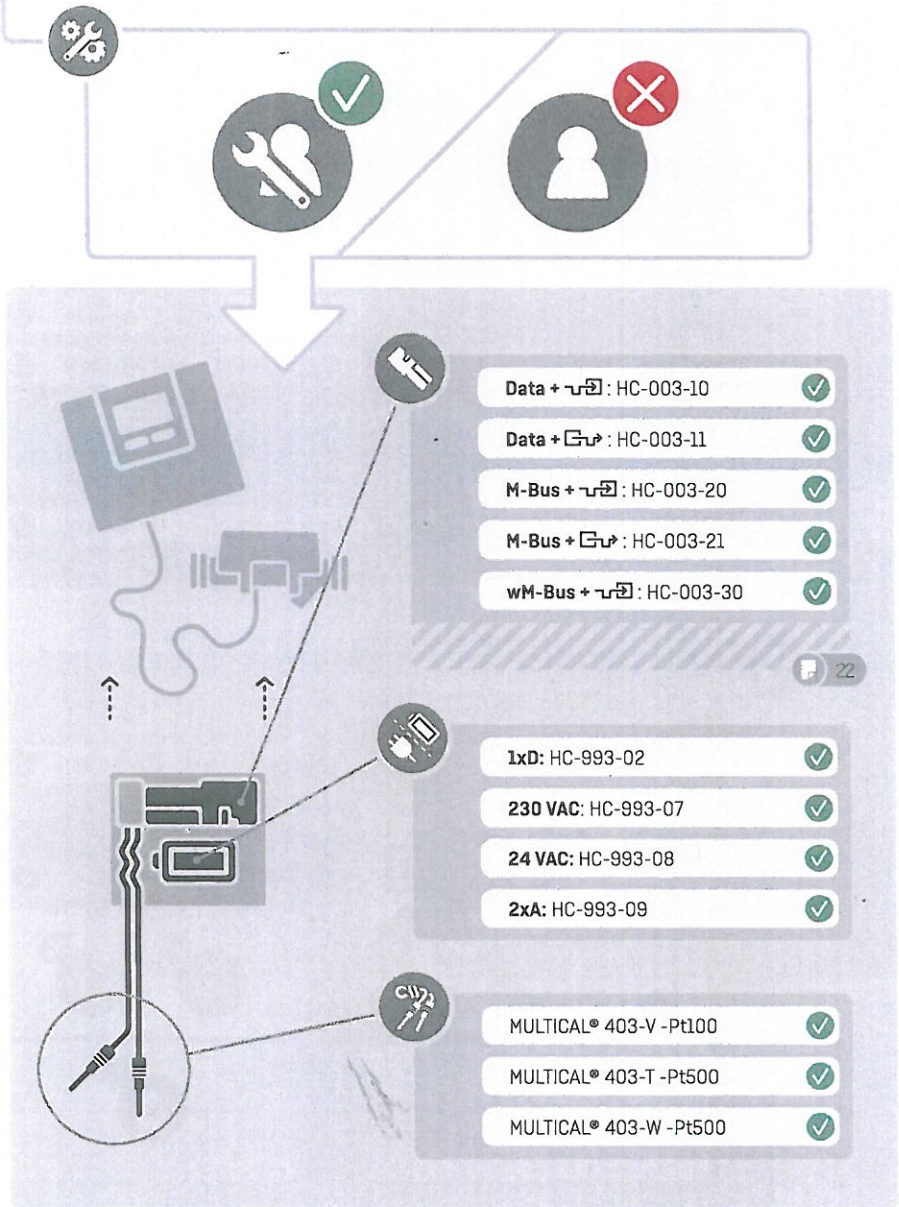
<http://products.kamstrup.com>



- E1**
 - MID ✓ EN1434 ✓
 - θ: 2 °C...180 °C Δθ: 3 K...178 K ✓
- E2**
 - DK-BEK 1178 ✓ EN1434 ✓
 - θ: 2 °C...180 °C Δθ: 3 K...178 K ✓
- E3**
 - θq: 2 °C...130 °C ✓



- E1** ✓
- M1 ✓ M2 ✓
- 5 °C...55 °C ✓
- Home icon ✓
- Home icon ✗
- Humidity icon ✗



Diagrammatic instructions for cable preparation:

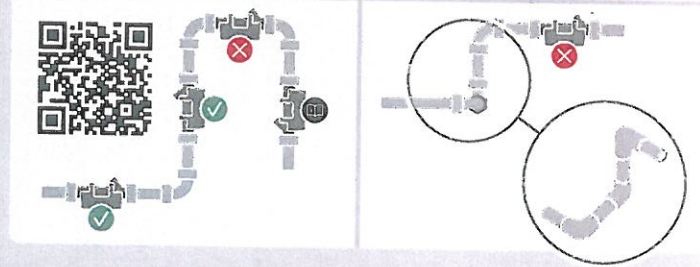
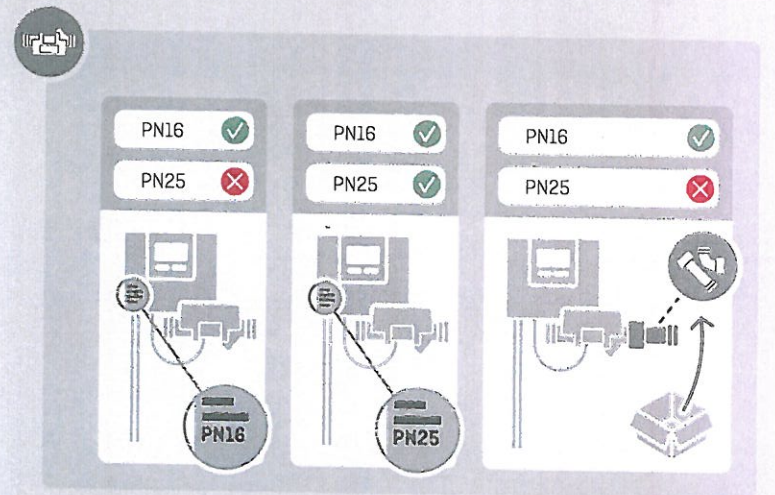
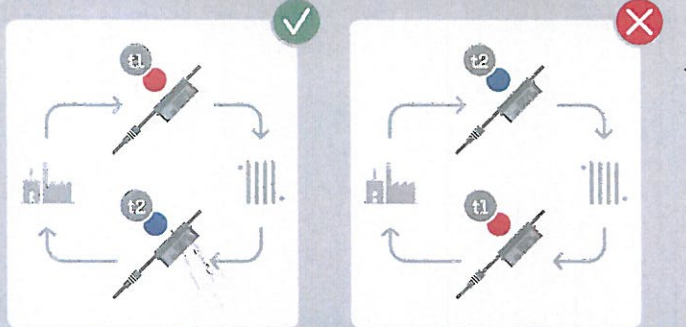
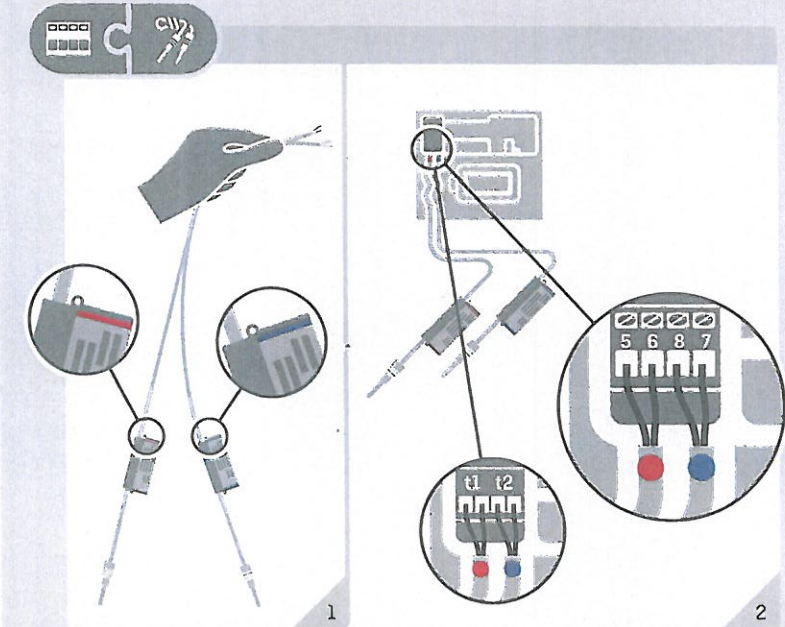
- Top row: Shows correct (✓) and incorrect (✗) methods for stripping two wires. The correct method uses a stripping tool with a '2' multiplier, while the incorrect method uses a single wire with a '1' multiplier.
- Middle row: Shows correct (✓) and incorrect (✗) methods for cutting wires. The correct method uses side cutters, while the incorrect method uses regular scissors.
- Bottom row: Shows two crimping methods. The left method is labeled 'PL' (✓) and shows crimping two wires together. The right method is labeled 'DS' (✓) and shows crimping a single wire.

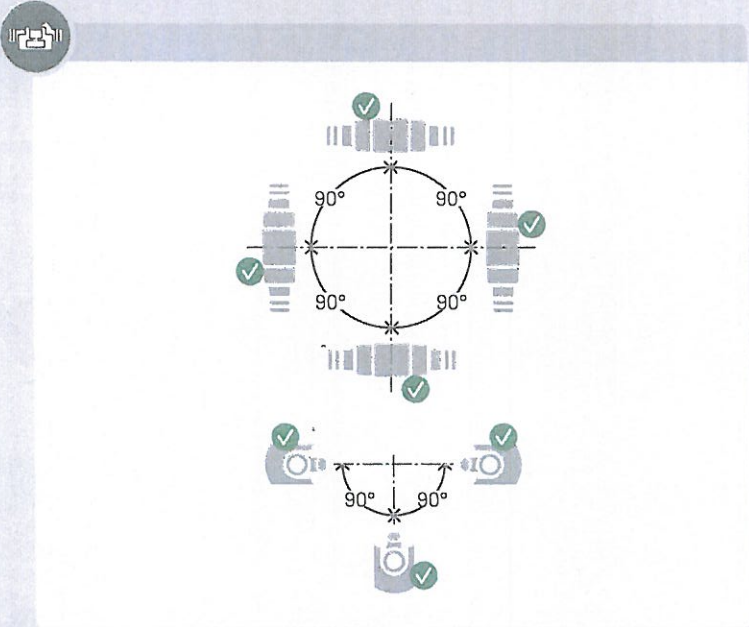
Table of cable specifications:

qP	DN	Ø	DS 27.5	DS38
0.6-1.5	15	6x4B	✓	-
0.6-1.5	20	01B	✓	-
3.5-6	25	05/4B	✓	-
10	40	02B	-	✓
15	50	-	-	-

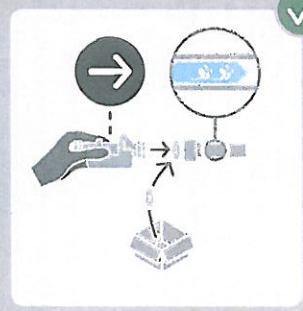
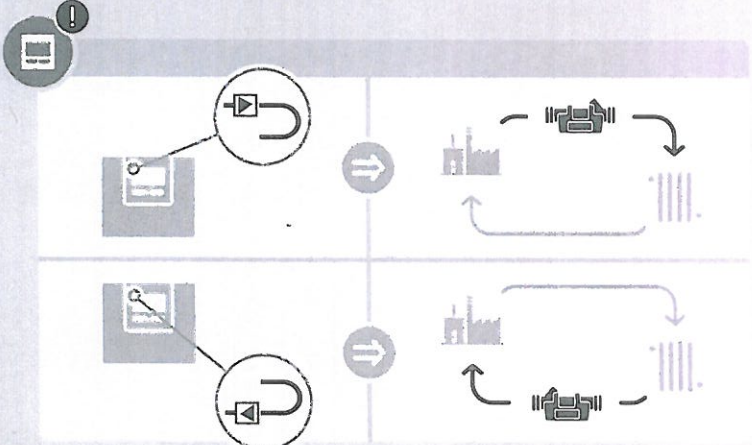
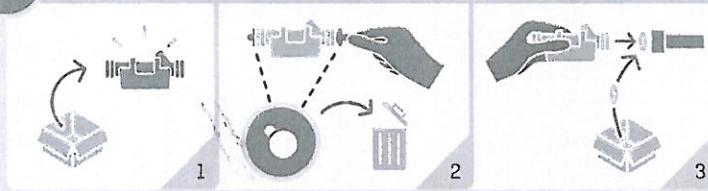
Diagrammatic instructions for crimping configurations:

- Left diagram: Shows crimping two wires together. Labels: PN16 ✓, PN25 ✓.
- Right diagram: Shows crimping a single wire. Labels: PN16 ✓, PN25 ✗.



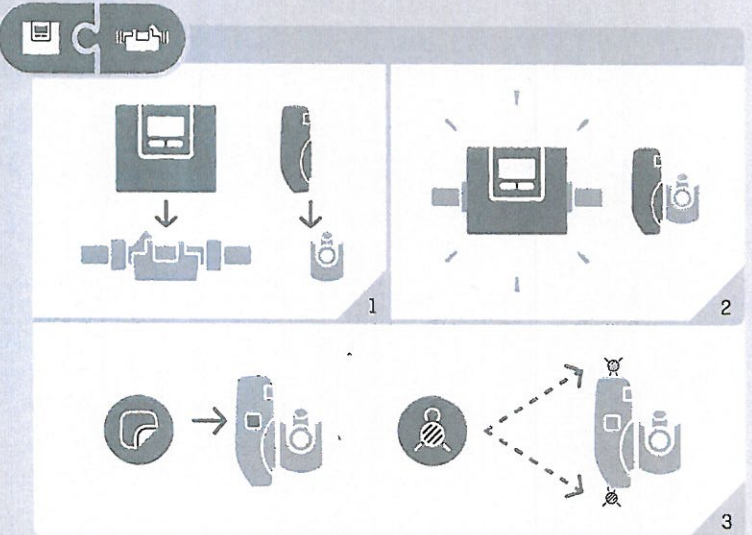


MULTICAL® 403-T ✓

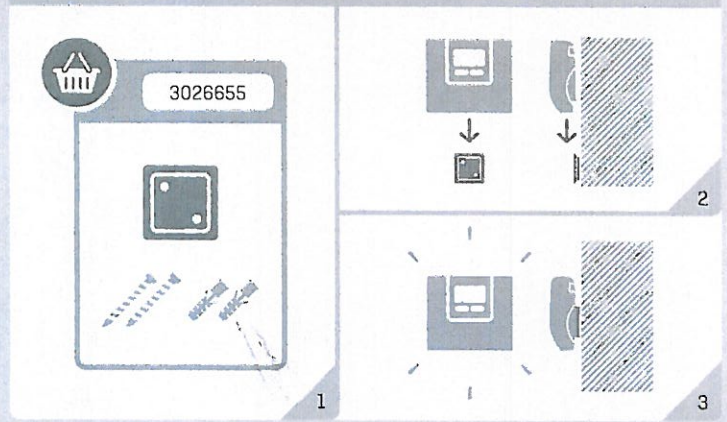




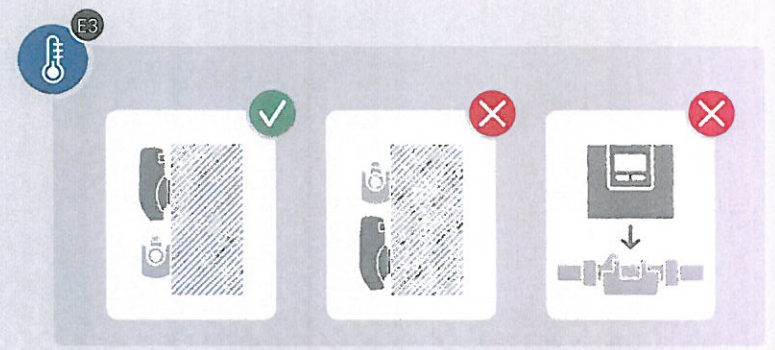
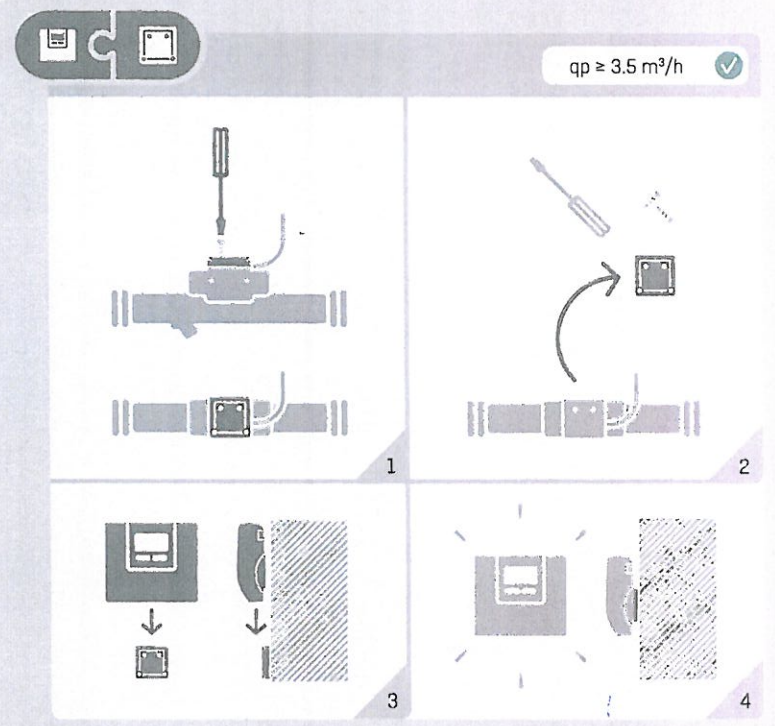
1/2

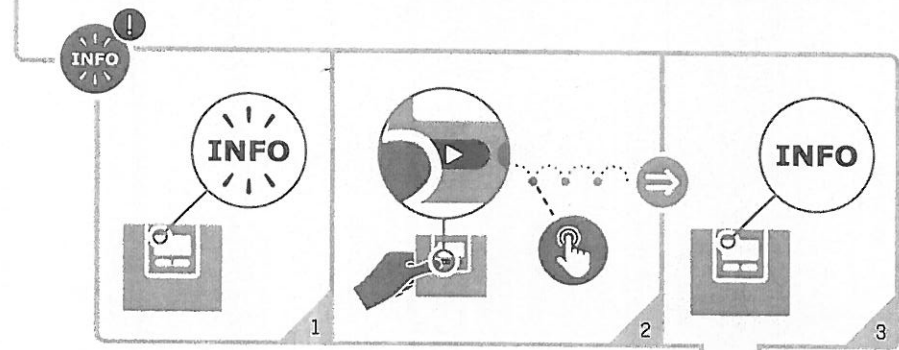


qp ≤ 2.5 m³/h ✓



2/2





1/3

1	2	3	4	5	6	7	8
Info	t1	t2	0	V1	0	In-A	In-B
1							
	1						
2							
	2						
9							$\Delta t (t1-t2) = \times$



2/3

1	2	3	4	5	6	7	8
Info	t1	t2	0	V1	0	In-A	In-B
							$t1 > 185\text{ }^\circ\text{C}$
		1					$t2 > 185\text{ }^\circ\text{C}$
	2						$t1 < 0\text{ }^\circ\text{C}$
		2					$t2 < 0\text{ }^\circ\text{C}$
	9	9					$\Delta t (t1-t2) = \times$



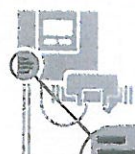
1	2	3	4	5	6	7	8
Info	t1	t2	0	V1	0	In-A	In-B
				3			
				4			
				6			
						8	
						9	
						8	
						9	





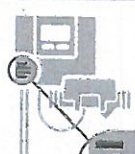

2/2

230 VAC / 50 Hz / 1 W



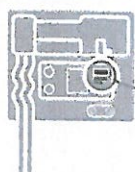
230 VAC / 50 Hz / 1 W

24 VAC / 50 Hz / 1 W



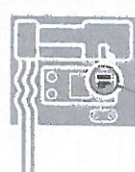
24 VAC / 50 Hz / 1 W

230 VAC

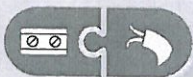


230 VAC

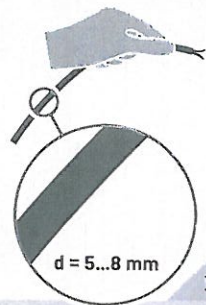
24 VAC



24 VAC



d = 5...8 mm



d = 5...8 mm

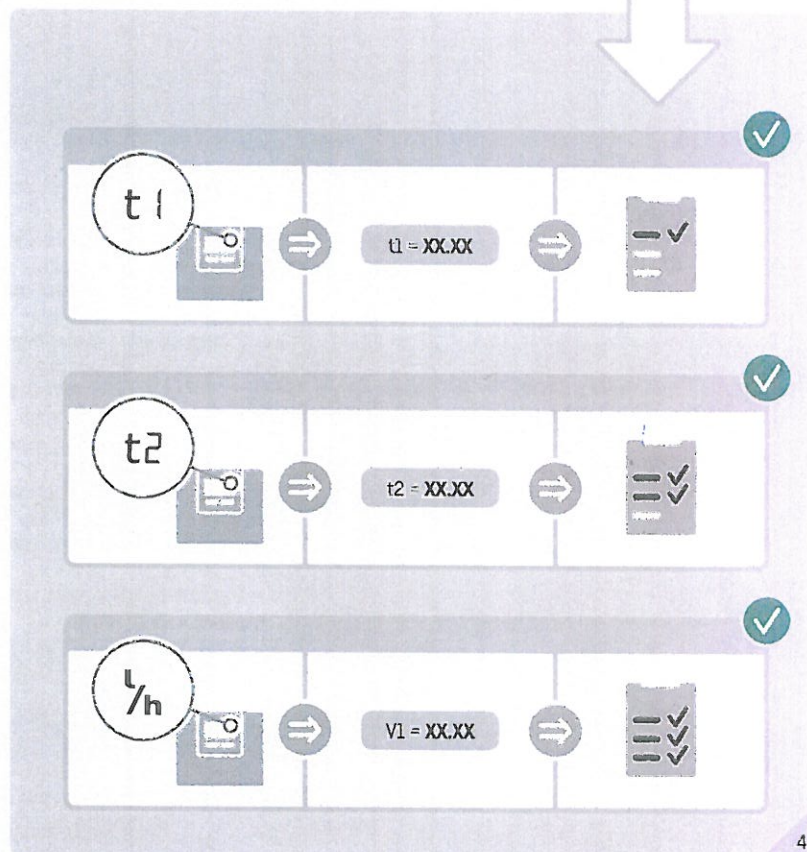
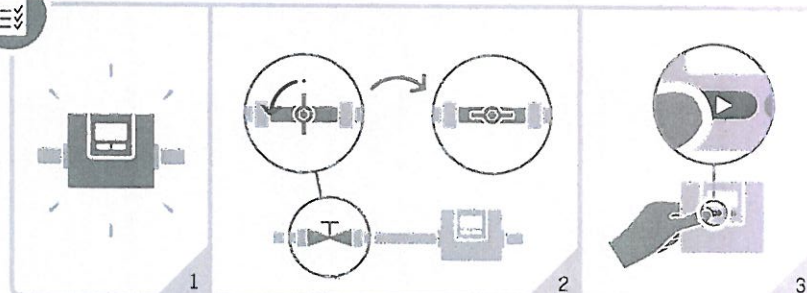
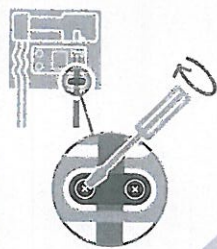
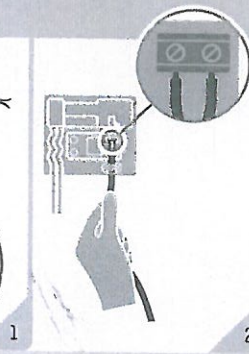


Diagram showing a terminal block with various connection options. A list of options is provided, each with a checkmark indicating it is supported:

- Data + In-A: HC-003-10 ✓
- Data + Out-C: HC-003-11 ✓
- M-Bus + In-A: HC-003-20 ✓
- M-Bus + Out-C: HC-003-21 ✓
- M-Bus + In-B: HC-003-22 ✓
- wM-Bus + In-A: HC-003-30 ✓
- wM-Bus + Out-C: HC-003-31 ✓
- Analog Out 1: HC-003-40 ✓
- BACnet + In-A: HC-003-66 ✓
- Modbus + In-A: HC-003-67 ✓

Legend:

- In-A / In-B
- Out-C / Out-D
- Out 1 / Out 2

Diagram showing a network of four energy meters. The meters are numbered 1 through 4, corresponding to the legend below. Meter 1 shows a reading of 0030297 MWh. Meter 2 shows a reading of 0015363 MWh. Meter 3 shows a reading of 0105133 m³. Meter 4 shows a reading of 0018483 h. The legend includes icons for temperature (E1, E3), volume (VOL), and time (h).

Legend:

- 1: E1 (Temperature)
- 2: E3 (Temperature)
- 3: VOL (Volume)
- 4: h (Time)

kamstrup



MULTICAL® 403

